

GT Liquid Cooling Solution reliability, liquid-cooled for safe operation

The importance of liquid cooling safety



Liquid Cooled Servers

Underlying Elements of Intrinsic Security



Cooling Medium



Conventional Air-Cooled Systems - Gas

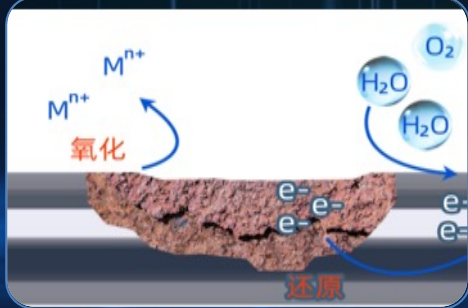


Liquid-Cooled Systems - Liquid

Reliability Risk Identification

Compatibility Issues

Material Incompatibility



CDU/connector/cabinet/quantity/pipe are procured separately, with incompatible materials throughout the chain and corrosion in later applications.

Workpiece Incompatibility



Incompatibility and corrosion of the workpiece with various materials, metals and non-metals in contact with the liquid.

Application Issues

Cleanliness Issues



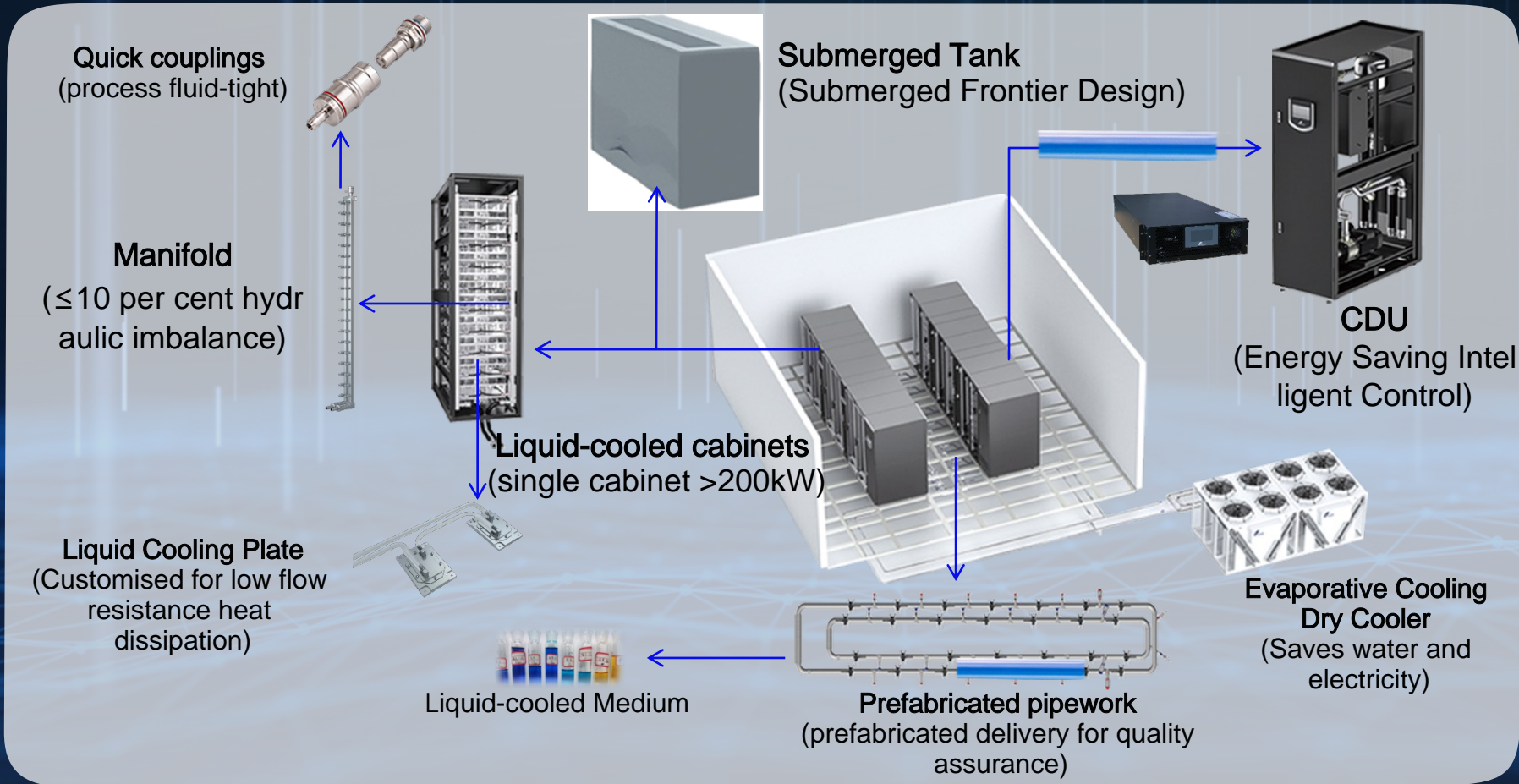
Cleanliness of liquid-cooled equipment components to avoid clogging of impurities or adhesion of joints quality.

Server Testing



Liquid-cooled servers are tested for airtightness before and after shipment to avoid vibration loosening during transport and installation, and to protect against liquid leakage.

Liquid-cooled Masses Throughout the Chain



Liquid-cooled media (Throughout the system)

Full Chain Liquid Cooling Capability



EMC Laboratory



Applied Materials
Laboratory



Materials Characterisation
Laboratory



Physical & Chemical
Laboratory



Air Conditioning
Enthalpy Difference
Laboratory



Components & Reliability
Laboratory

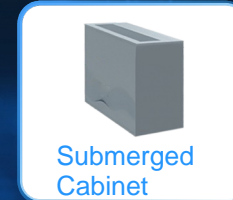
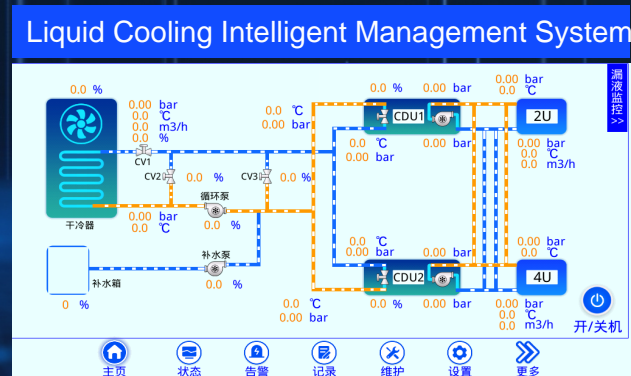


Safety Laboratory

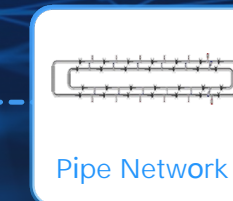


Noise Laboratory

Decoupled and Reliable



Liquid-Cooled Process



Integrated Liquid-Cooled Cabinets

- Cabinets, CDUs, Manifolds, Piping, Quick Connectors Integration
- Server testing without any engineering plumbing





GOTTOG