

SM-S5A Column Weighing Load Cell



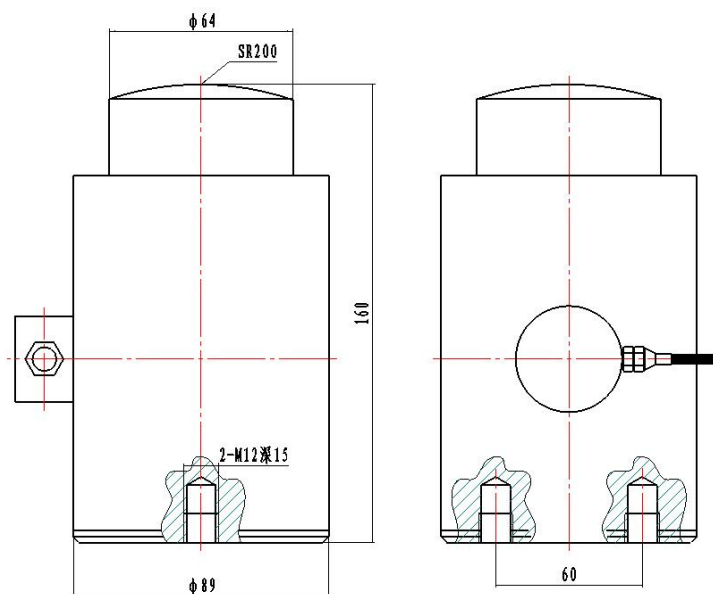
1. Description:

- The SM-S5A load cell adopts the BH series foil strain gauges produced with American raw materials and the proprietary processing technology of the American BEAN Company as the power-to-electricity conversion elements, the load-bearing mode is a compression structure. It has fast dynamic response and strong overload capacity. It has a relatively good automatic heart adjustment function, waterproof and dustproof, easy to install. It is convenient to use and fully meets the weighing requirements of large tonnage. It can be used for manufacturing electronic truck scales, dynamic rail scales, large-tonnage hopper scales, and industrial weighing and material level control of large-tonnage silos and hoppers.

2. Characteristics:

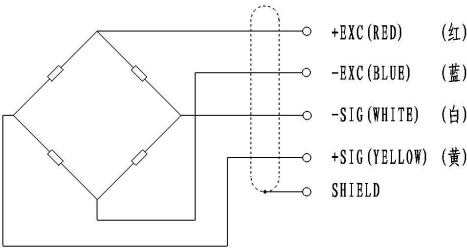
- Fully sealed and waterproof, suitable for harsh environments.
- Good dynamic response and strong overload resistance.
- Stable performance and reliable over the long term.

Dimension (In mm. 1mm=0.03937 inches)



Circuit Diagram:

Red: +input
 Blue: -input
 White: +output
 Yellow: -output



Type	Technical parameters
Nominal load range	30 ~ 100t
Power supply	10~12 VDC
Zero balance	1.0±% of rated output
Analog output	2.0±0.002mV/V
Input resistance (Rlc)	400±20Ω (ohms)
Output resistance (Ro)	380±5Ω (ohms)
Insulation resistance	≥5000 MΩ (Mege-Ohms)
Class precision	0.05%FS
Effect of temperature	0.02%FS/10℃
Operating temperature	-40 ~ +85℃
Safe Load Limit	200% FS
Safety margin against yielding	300% FS
Safety margin against breakage	500% FS
Material material	High performance alloy steel or (chromium ratio>15% stainless steel)
Protection type	IP68

Specification: