

## SM6F S-type Load Cell

### Description

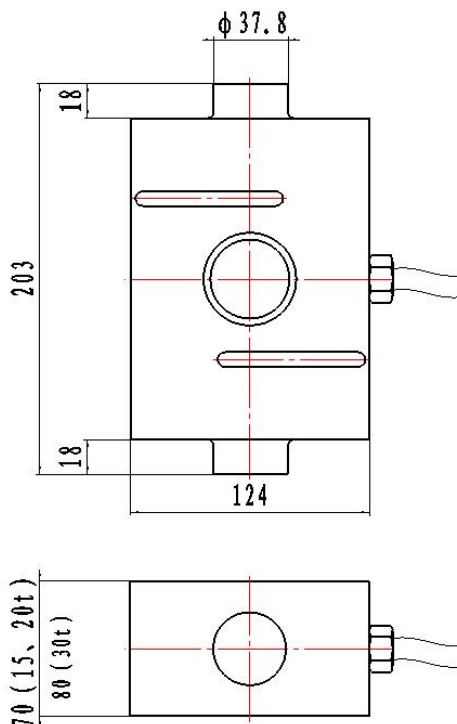
The sensor is made of alloy steel or stainless steel and features an S-shaped parallel beam type. It is produced by introducing raw materials from the United States and the proprietary processing technology of the American BEAN Company.

**Applied to:** testing machine, hopper scale, hook scale, push-pull force gauge, riveting machine, welding machine, cold-hot pressing film laminating machine, keyboard button feel tester and other tensile and compressive force testing instruments, field of automated equipment and industrial measurement.

**Characteristics:** Bidirectional tension and compression bearing, stability, high precision, compact structure, convenient to install.

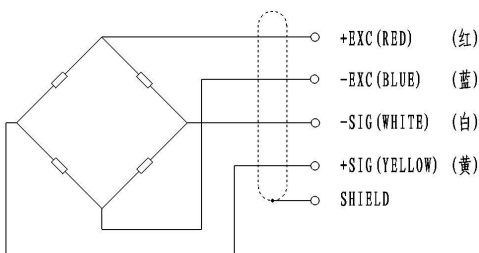


### Dimensions 外形尺寸 (In mm, 1mm=0.03937 inches)



### Circuit Diagram:

Red: +input  
Blue: -input  
White: +output  
Yellow: -output



### Specification:

Type	Technical parameters
Nominal load range	500 ~ 5000kg
Power supply	10~12 VDC
Zero balance	1.0±% of rated output
Analog output	2.0±0.015mV/V
Input resistance (R <sub>ic</sub> )	380±5Ω (ohms)
Output resistance (R <sub>o</sub> )	350±2Ω (ohms)
Insulation resistance	≥5000 MΩ (Mege-Ohms)
Class precision	0.05%FS
Effect of temperature	0.05%FS/10°C
Operating temperature	-40 ~ +85°C
Safe Load Limit	200% FS
Safety margin against yielding	300% FS
Safety margin against breakage	500% FS
Material material	High performance alloy steel or (chromium ratio>15% stainless steel)
Protection type	IP67



SUNMOON  
日月科技

---