

SM-P23L Load Pin



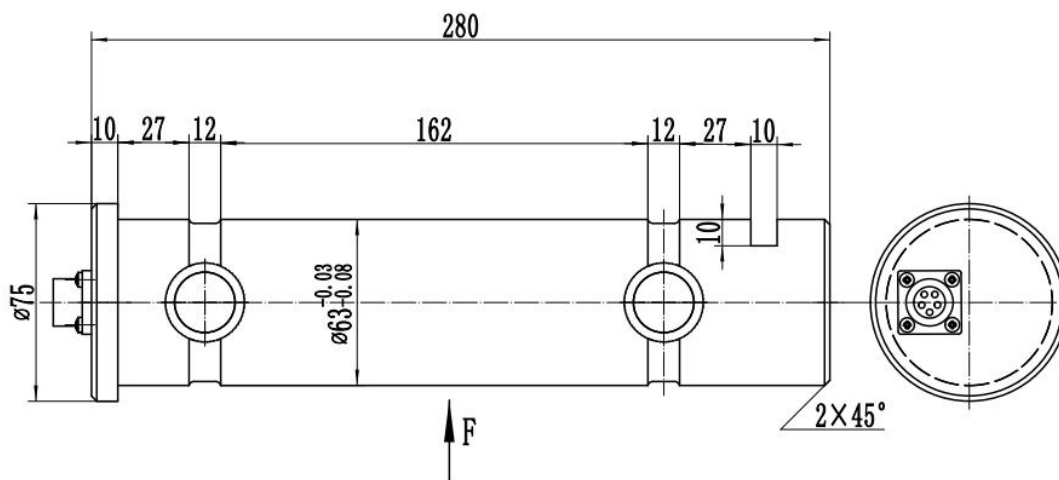
Description:

The SM-P23L load pin has a compact structure, a simple geometric shape, strong anti-torsion and anti-bending capabilities, stable performance and easy to install. It is widely used in the measurement of goods at ports and docks, as well as in the safety inspection of hoists and lifting equipment. An optional built-in amplifier 4-20mA is available.

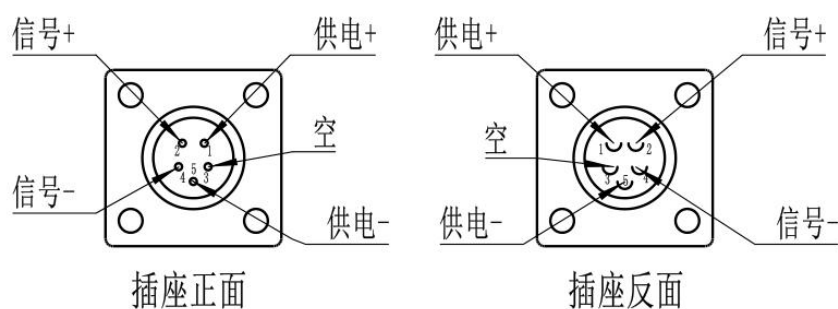
Characteristics:

- Simple structure
- strong anti-eccentric load capacity.
- High measurement accuracy and stable performance.

Dimensions (In mm, 1mm=0.03937 inches)



Circuit Diagram:

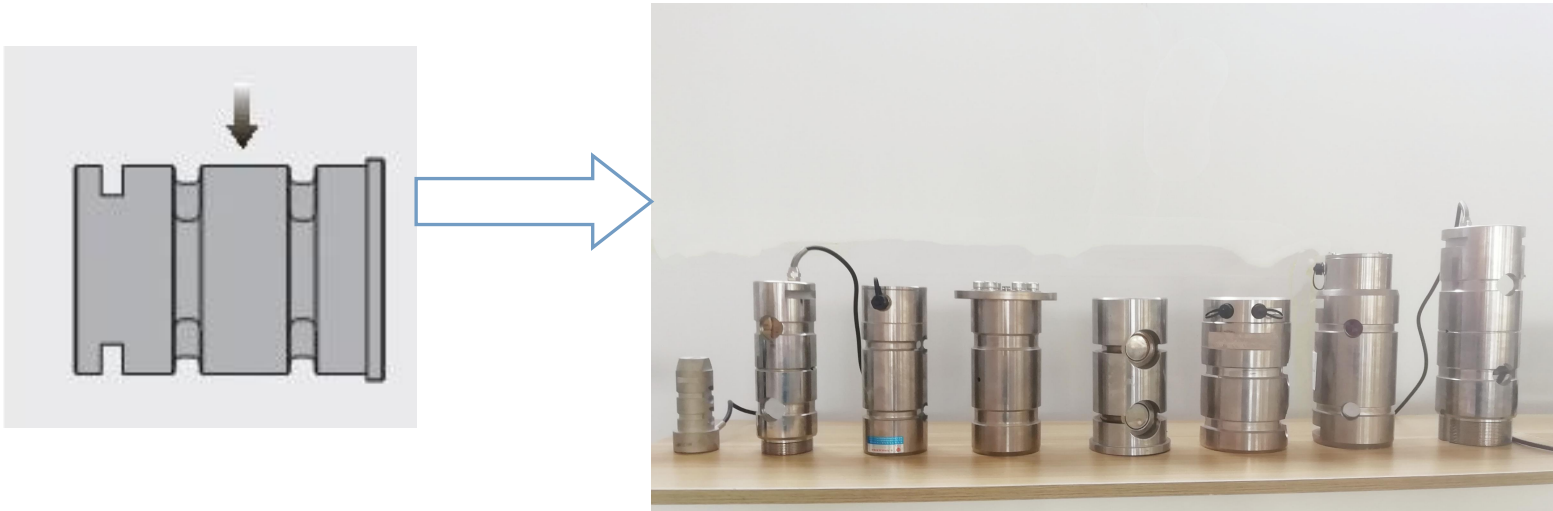


Specification :

| Type | Technical parameters | |
|---|--|-----------------------------|
| Nominal load range | 0 ~ 50t | |
| Power supply | 10~12 VDC | |
| Drawing current | <100 mA | |
| Double Independent redundant signal interface | Analog output | 1.0±0.015mV/V |
| | Analog output | 4~20mA/24VDC |
| | CAN Bus | CAN open CAN open Safety |
| Class precision | 0.5%F.S | |
| Effect of temperature | 0.5%F.S/10°C | |
| Operating temperature | -40 ~ +85°C | |
| Safe Load Limit | 200% F.S | |
| Safety margin against yielding | 300% F.S | |
| Safety margin against breakage | 500% F.S | |
| Material material | High performance alloy steel or (chromium ratio>15% stainless steel) | |
| Protection type | IP67 (IEC60529) | |
| Climate test | EN60068-2-30,DB55°C/100% | |
| Vibration resistance | EN60068-2-6,5-500Hz,50g,10mm | |
| Shock resistance | EN60068-2-27(half sine) 50g,11ms,1000shocks; 1000g,1ms,50shocks | |

Measurement Principle

The pin sensor utilizes the elastic deformation of an elastic body under the action of an external force, causing the resistance value of the resistance strain gauge adhered to its surface to change (increase or decrease). Then, through the corresponding measurement circuit, this resistance change is converted into an electrical signal (voltage or current), thereby completing the force measurement process.



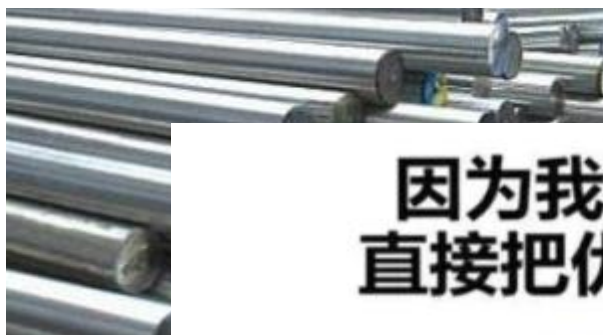
Detailed Description



▲ 用螺帽固定的接口内部连接不易脱落，也不用担心工业场合中电磁对传感的影响了

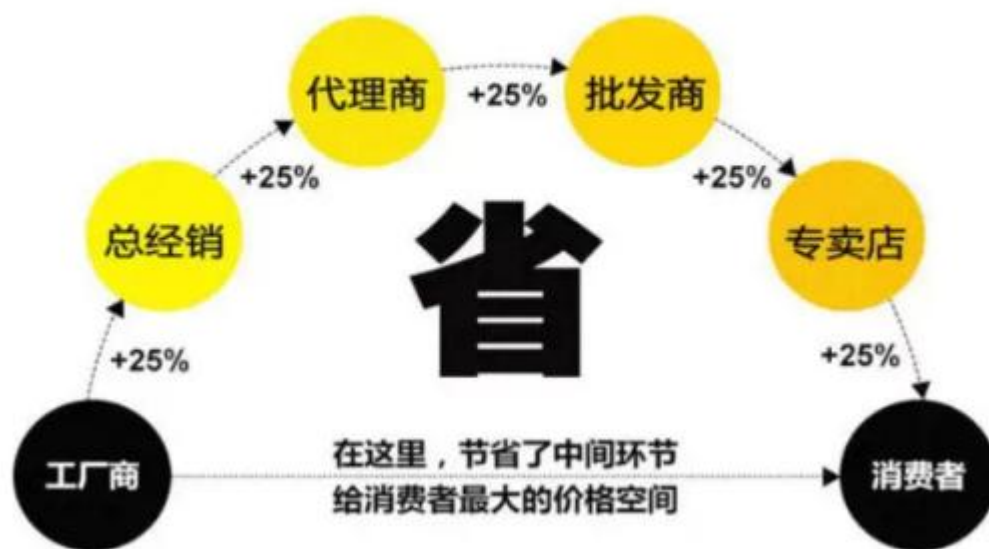


▲ 中间应变区域有盖板保护，工作环境在恶劣也不怕进灰尘了



材料采用高性能合金钢或不锈钢

**因为我们是厂家直销
直接把优惠送给消费者**





SUNMOON
日月科技
