

SM11C Pressure Sensor

1. Description

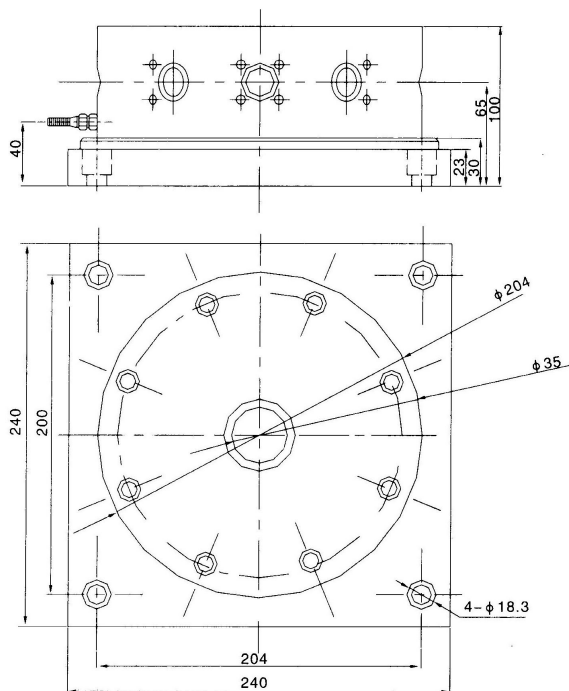
Diaphragm box type load sensor. It adopts a flat diaphragm for pressure sensing, and the housing and diaphragm are of an integrated structure. It is widely applied in various electronic scales, cement mixing silos, dry powder mixers and industrial automation measurement and control systems.

2. Characteristics

- Low profile
- Long-term stability.
- The surface of alloy steel is bright plated.
- Applicable to force testing and process weighing, etc.
- 3-wire system with 24V power supply and 0-10V output

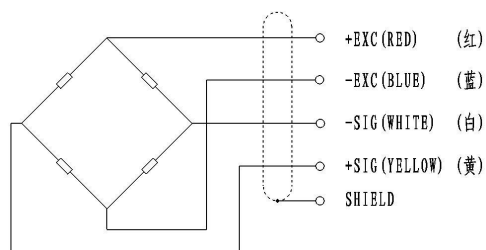


Dimensions (In mm. 1mm=0.03937 inches)



Circuit Diagram:

Red: +input
 Blue: -input
 White: +output
 Yellow: -output





SUNMOON
日月科技

Specification:

Type	Technical parameters
Nominal load range	100 ~ 350t
Power supply	10~12 VDC
Zero balance	$1.0 \pm \%$ of rated output
Analog output	$2.8 \pm 0.015 \text{mV/V}$
Input resistance (R _{ic})	$770 \pm 10 \Omega$ (ohms)
Output resistance (R _o)	$700 \pm 2 \Omega$ (ohms)
Insulation resistance	$\geq 5000 \text{ M} \Omega$ (Mege-Ohms)
Class precision	0.05%FS
Effect of temperature	0.05%FS/10°C
Operating temperature	-40 ~ +85°C
Safe Load Limit	200% FS
Safety margin against yielding	300% FS
Safety margin against breakage	500% FS
Material material	High performance alloy steel or (chromium ratio>15% stainless steel)
Protection type	IP67/IP68



SUNMOON
日月科技
