

SM32A Miniature Sensor

Description

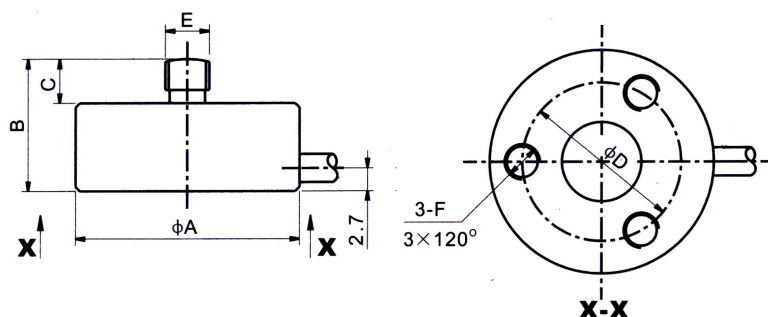
The sensor is made of alloy steel or stainless steel and features a low-profile diaphragm box structure. It is produced by introducing raw materials from the United States and the proprietary processing technology of the American BEAN Company. Laser sealing welding, compression bearing.

It is mainly applied in the fields of key feel tester, pressure detection of cold and hot presses, force value detection with small installation space such as robot hand grip, and various metering equipment.

Characteristics: strong anti-eccentric load capacity, good impact resistance, waterproof and oil-proof, corrosion-resistant, compact in size and easy to install.



Dimension (In mm. 1mm=0.03937 inches)



CAP. /SIZE	A	B	C	D	E	F
kg/mm						
10~200	20	11	4	15	M3	M3×4
500~2000	25.4	15	5	18	M5	M4×5
lb/inches (conversion of above dimensions)						
22.05~440.92	7.87	4.33	1.57	5.91	M3	M3×4
1102.31~4409.25	####	5.91	1.97	7.09	M5	M4×5

Circuit Diagram:

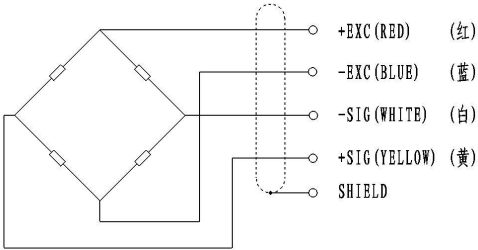
- Red:

+input
- Blue:

-input
- White:

+output
- Yellow:

-output



Specification:

Type	Technical parameters
Nominal load range	10 ~ 2000kg
Power supply	10~12 VDC
Zero balance	1.0±% of rated output
Analog output	1.0±0.015mV/V
Input resistance (R _{ic})	750±5Ω (ohms)
Output resistance (R _o)	700±2Ω (ohms)
Insulation resistance	≥5000 MΩ (Mege-Ohms)
Class precision	0.05%FS
Effect of temperature	0.05%FS/10°C
Operating temperature	-40 ~ +85°C
Safe Load Limit	200% FS
Safety margin against yielding	300% FS
Safety margin against breakage	500% FS
Material material	High performance alloy steel or (chromium ratio>15% stainless steel)
Protection type	IP66