

SM4 Column Sensor

1. Description

The SM4 column load sensor is designed for the test of well power diagrams of pumping units. It is a sensor with high anti-interference performance. Its product adopts standard mv signal output and fully sealed design, and can operate in harsh environments such as high temperature, high cold, high humidity and high radiation. Widely used in the power diagram measurement system of oil pumping units.

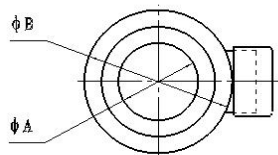
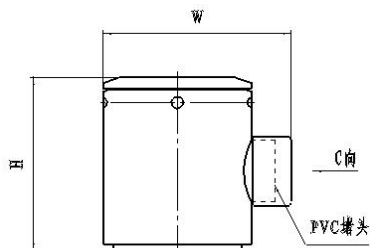
It is widely applied in oilfield pumping unit well smooth rod force measurement, truck scales, rail scales, hopper scales and other measuring equipment.。

2. Characteristics

- More than ten years of use in the oil production plant, it has been continuously improved.
- Fully sealed waterproof design, suitable for all-weather use.
- Optimize the plug to enhance reliability.
- Convenient and safe operation.
- Zero adjustment is available externally.
- Use together with the SM38WX type wireless data transmission fixed load/displacement transmitter to form a wireless test system
- The output is consistent and completely interchangeable.
- SM4B and SM4F are integrated standard current and voltage output types.



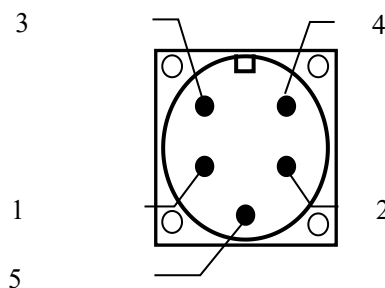
Dimensions (In mm. 1mm=0.03937 inches)



量程	H	A=30		A=35		A=40		A=50	
		W	B	W	B	W	B	W	B
1t~15t	90	95	64	106	74	106	74	112	81

Circuit Diagram:

- 1: + input
- 2: -input
- 3: +output
- 4: -output
- 5: shielded



CTowards view
Wiring diagram for
five-core socket



SUNMOON
日月科技

Specification:

Type	Technical parameters
Nominal load range	0 ~ 250 KN
Sensitivity	1.0±0.05mV/V
Class precision	0.5%FS
Input Impedance	730±5
Output Impedance	700±1
Zero Balance	≤0.1%FS
Power supply	10VDC
Effect of temperature	0.5%FS/10°C
temperature compensation	-10~65°C
Operating temperature	-40 ~ +85°C
Safe Load Limit	150% FS
Material material	High performance alloy steel or (chromium ratio>15% stainless steel)
Protection type	IP67 (IEC60529)