

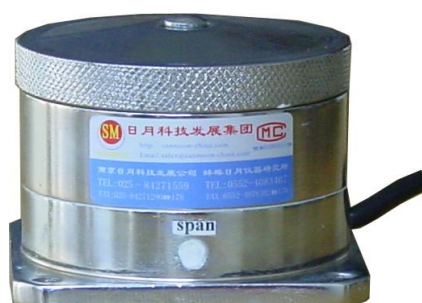
SM8B Load Cell

Description

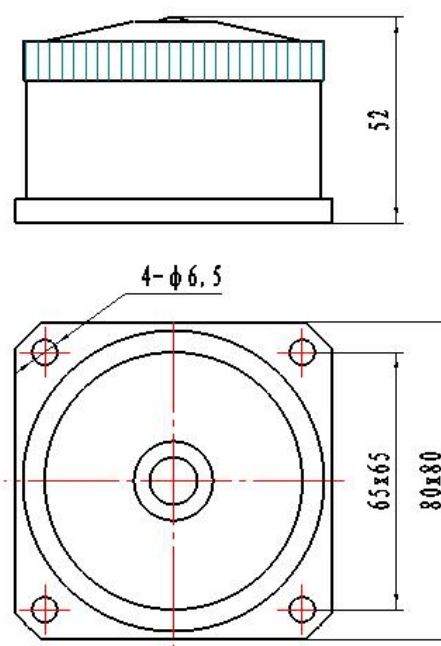
The sensor is made of alloy steel or stainless steel and features a low-profile diaphragm box structure. It is produced by introducing raw materials from the United States and the proprietary processing technology of the American BEAN Company. Laser sealing welding, compression bearing.

It can adapt to harsh working environments and is widely used in various measuring devices

Characteristics: anti-eccentric load capacity, impact resistance, small size, low installation surface, and high reliability

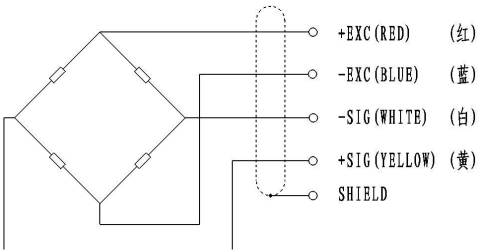


Dimensions 外形尺寸 (In mm. 1mm=0.03937 inches)



Circuit Diagram:

- Red: +input
- Blue: -input
- White: +output
- Yellow: -output



Type	Technical parameters
Nominal load range	5 ~ 300kg
Power supply	10~12 VDC
Zero balance	1.0±% of rated output
Analog output	2.0±0.015mV/V
Input resistance (R _{ic})	380±5Ω (ohms)
Output resistance (R _o)	350±2Ω (ohms)
Insulation resistance	≥5000 MΩ (Mege-Ohms)
Class precision	0.05%FS
Effect of temperature	0.05%FS/10°C
Operating temperature	-40 ~ +85°C
Safe Load Limit	200% FS
Safety margin against yielding	300% FS
Safety margin against breakage	500% FS
Material material	High performance alloy steel or (chromium ratio>15% stainless steel)
Protection type	IP66

Specifica
tion: