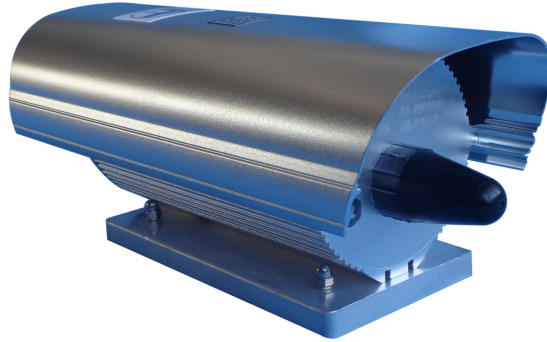


## SMDW36SC Wireless Angular Displacement Sensor



### Introduction

- Standard Zigbee wireless signal, no need for pipe laying and wiring, saving construction costs.
- Strong magnetic adsorption structure makes disassembly, assembly, relocation and maintenance convenient and fast. No fire, welding, drilling etc, and the original appearance of the oil derrick is not damaged.
- Real-time monitoring of the stroke and stroke of the pumping unit, well opening and well stopping alarms, etc. It can also be used for position feedback, angle detection, etc. in the lifting industry.
- Low power consumption design meets the data collection requirements of power diagram measurement oil density points and density times.

### Technical indicators

Item	Technical parameters
Range	$-45^{\circ} \sim 45^{\circ}$
Power supply	3.6 VDC38Ah disposable Lithium battery
Signal	Zigbee
Linear	$\leq 0.5\%F.S$
Repeatability	$\leq 0.15\%F.S$
Lag	$\leq 0.15\%F.S$
Output smoothness	$\leq 0.05\%$
Working temperature	$-40 \sim +70^{\circ}C$
Insulation resistance	2000 M $\Omega$
Communication protocol	ZigBee PRO 2007, transmission distance $\geq 100m$
Protection grade	IP65

## External dimensions

