



**Anhui Tianfu New Material Co.,Ltd.**

## **Fiberglass Chopped Strand Mats**



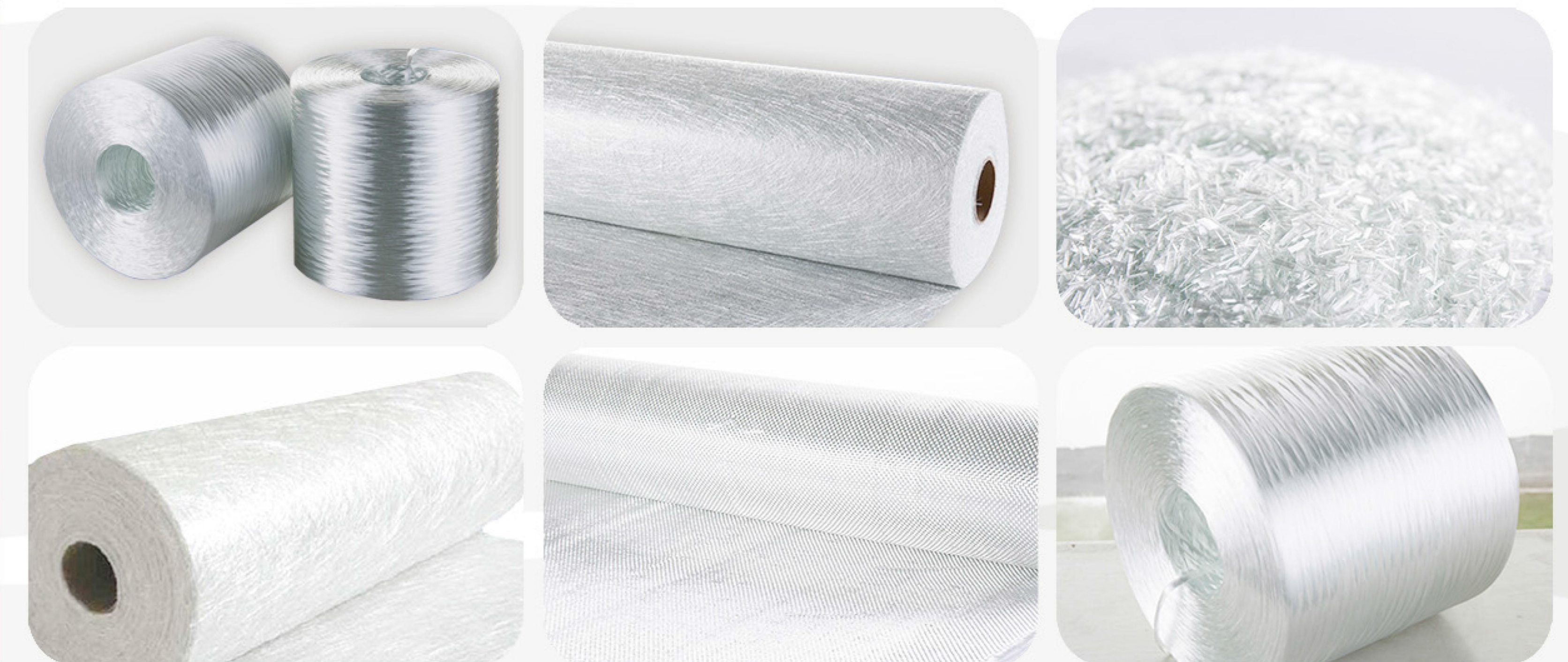
Anhui Tianfu New Material Co.,Ltd.

🏠 Address: Room 1716, Lvdi Building, Qianshan Road, Zhengwu District, Hefei City, Anhui Province, China.

🌐 Website: [www.tfcomposite.com](http://www.tfcomposite.com)

📞 Mobile/Whatsapp/Wechat/Skype: +86-13696771864

✉ E-mail: [sales@tfcomposite.com](mailto:sales@tfcomposite.com)



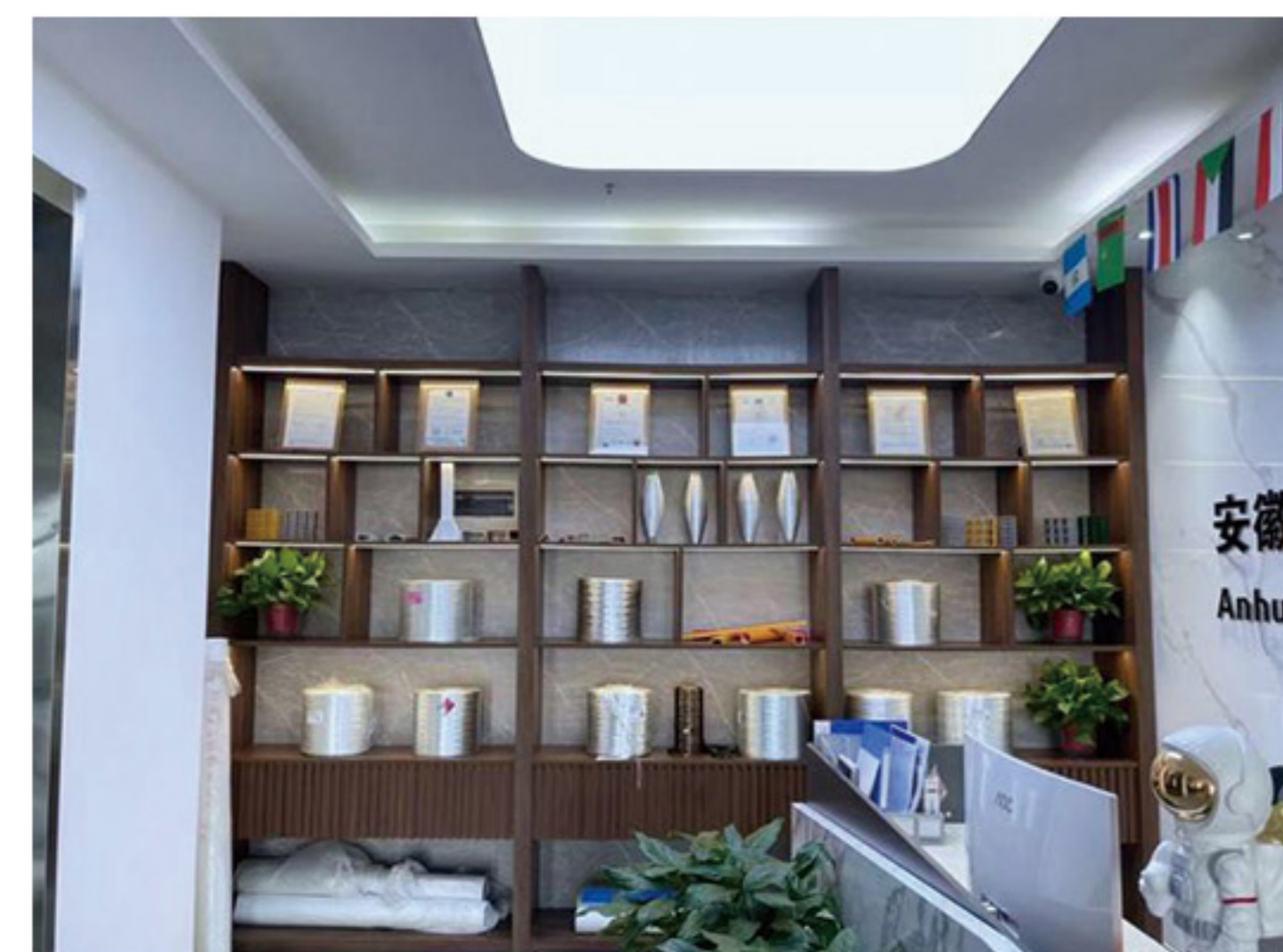
We are committed to providing cost-effective products and services !

# COMPANY PROFILE

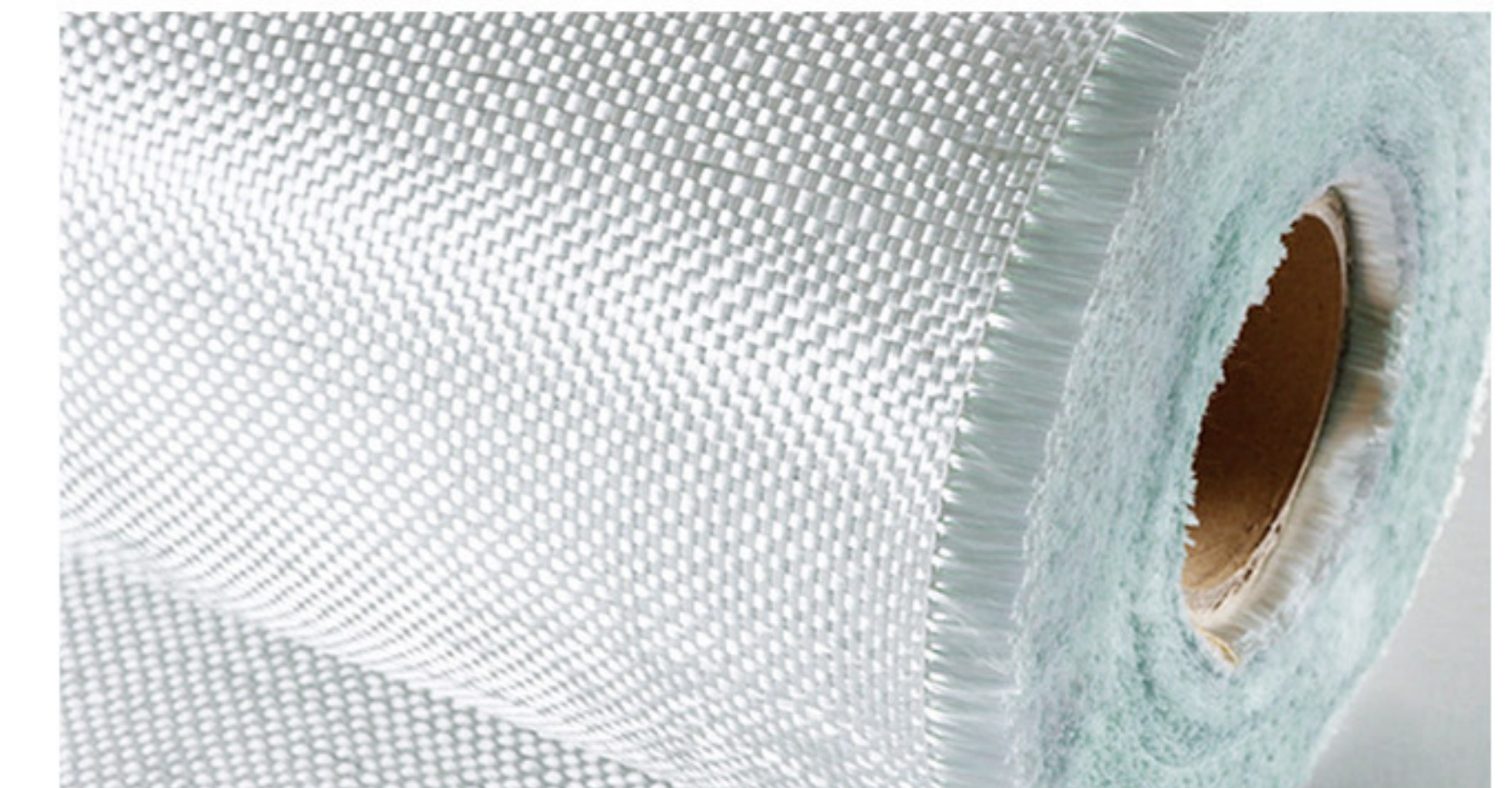
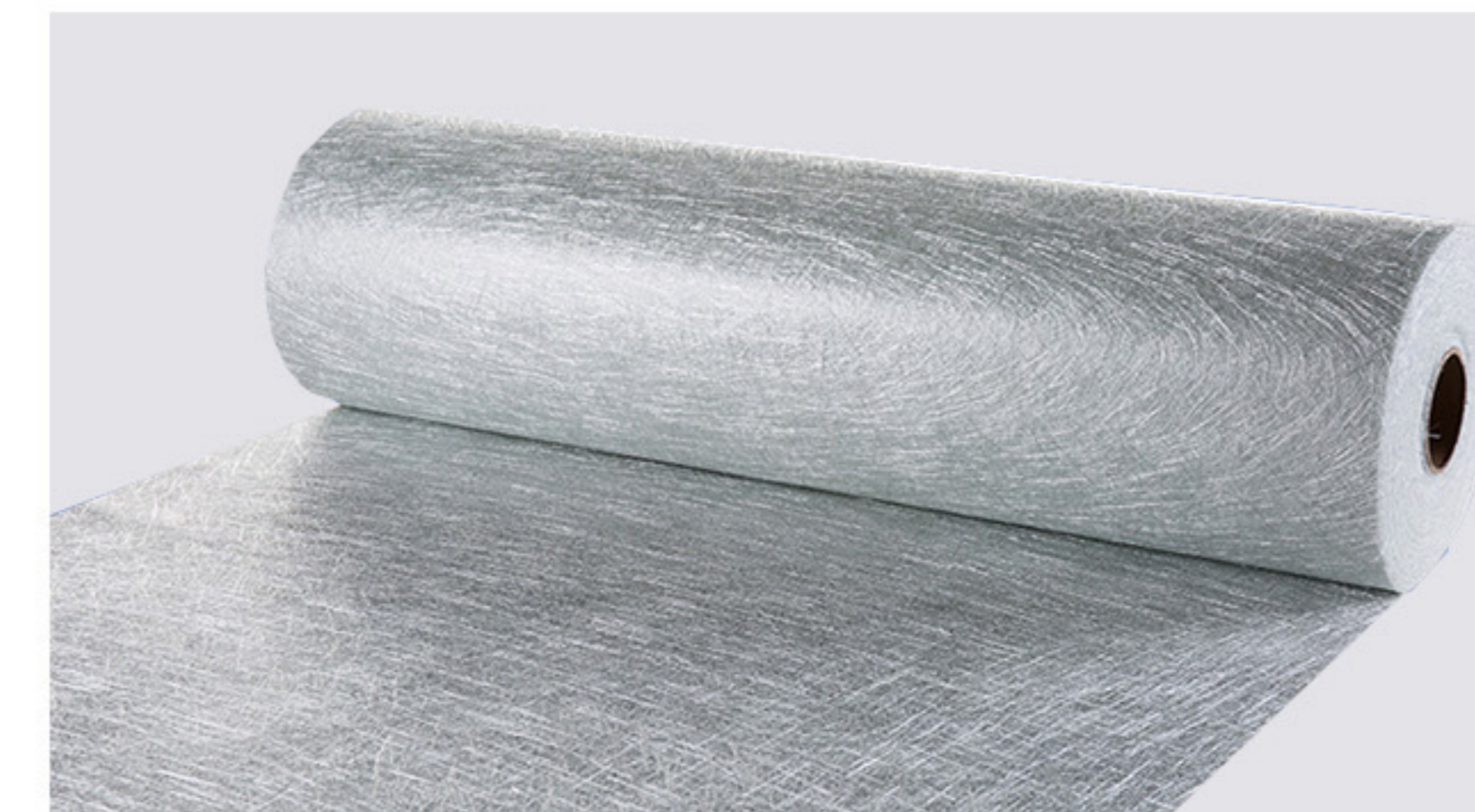
## About Us

Anhui Tianfu New Material Co.,Ltd. Located in Hefei, capital of Anhui Province, China. has involved in the fiberglass industry since 1998. Over the past years, we are committed to providing our customers with high quality and cost-effective products or services.

We are the agent of all the top glass fiber brands in China, including JUSHI, CPIC, CTG and so on. Additional, we have our own factory to produce woven roving, Chopped Strand, and Chopped Strand Mats. The factory area exceeds 15000 sq.m. , Our customers all over Europe, America and Southeast Asia, Our high quality products and affordable prices have won customers' praise and long-term cooperation.



## Products Show

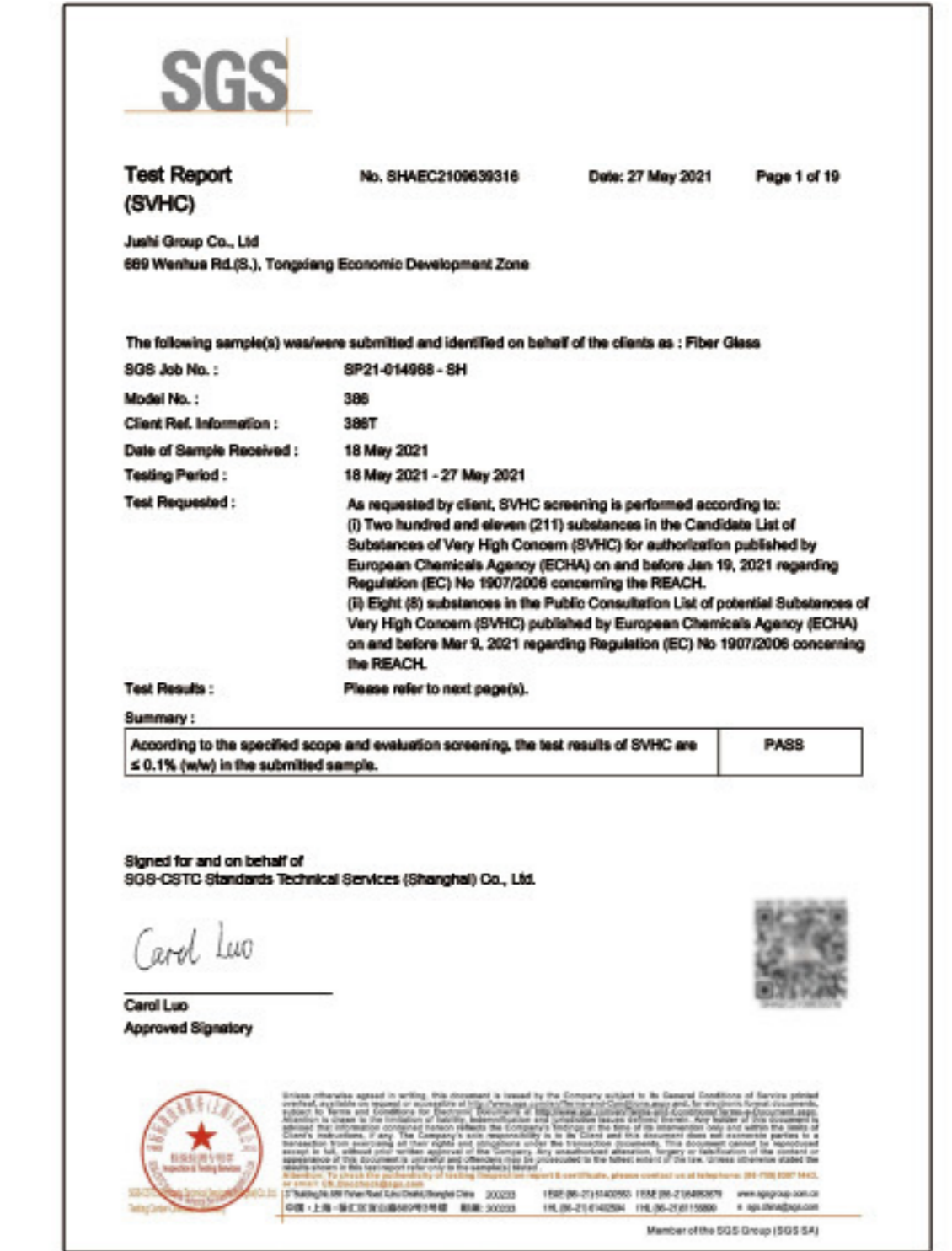
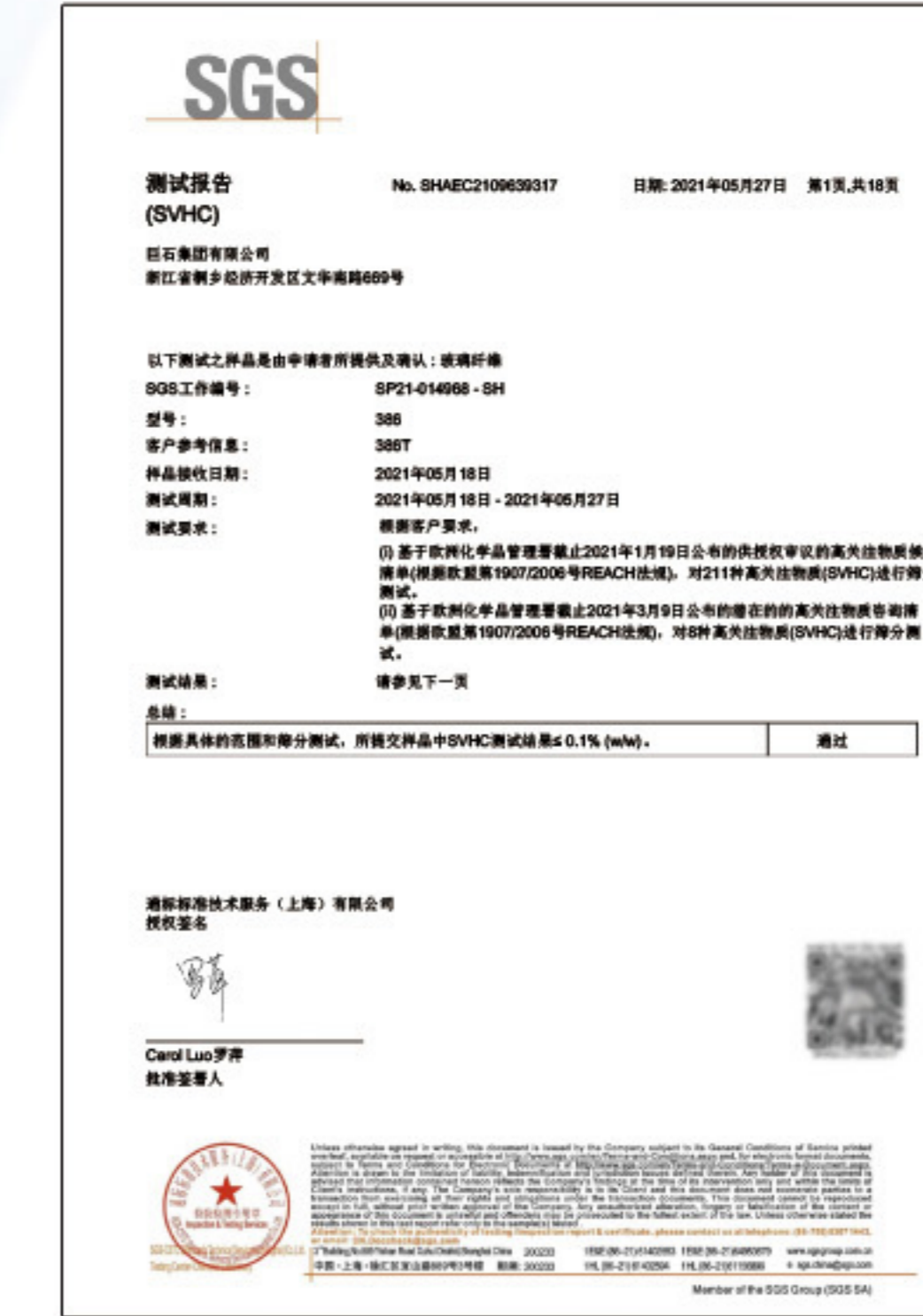
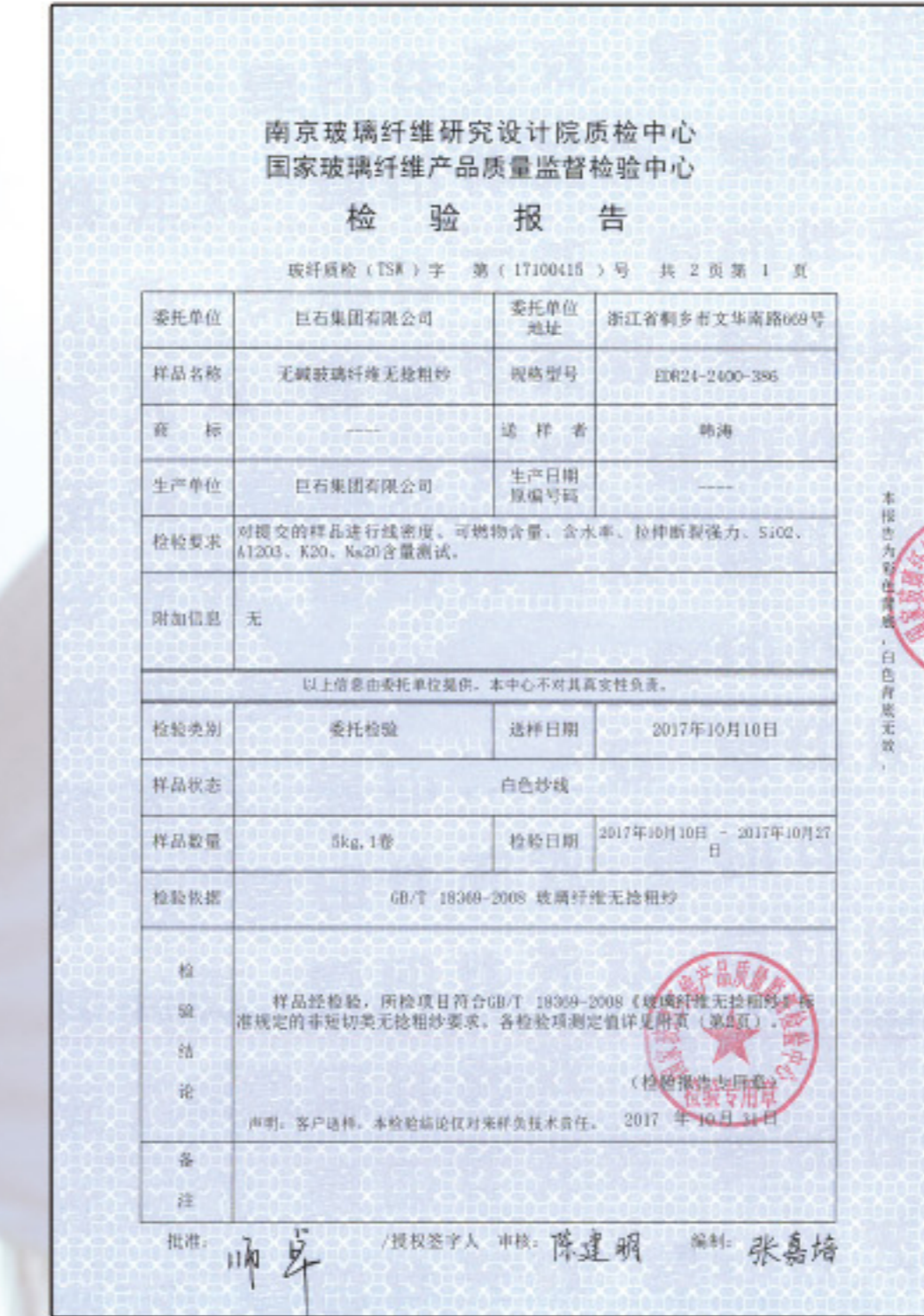


# COMPANY PROFILE

## Company Qualification



## Product certificate



## Certification certificate




# FIBERGLASS CHOPPED STRAND MATS

Product Name	Product Code	Area Weight(g/m2)	Typical Width(mm)	Resin Compatibility	Product Features
<b>Emulsion Chopped Strand Mats</b>  Emulsion Chopped Strand Mats are made of randomly distributed chopped strands held together by an emulsion binder. They are compatible with UP and VE resins. The roll width ranges from 200mm to 3,120mm. Special requirements may be available upon request.	E01	225,300,450,600,900	1040, 1270	UP, VE	High tensile strength, allowing for use in hand lay-up process to produce large-area parts, no airborne fiber when operating, good wet-through and fast wet-out in resins, rapid air release, high mechanical strength, superior acid corrosion resistance
	E10	225,300,450,600,900	1040, 1270	UP, VE	Rapid air release reducing rolling out times, low resin consumption
	E20	225,300,450,600,900	1040, 1270	UP, VE	Good moldability, good wet-through and fast wet-out in resins, rapid air release reducing rolling out times and increasing productivity, low resin consumption, high mechanical strength of composite products, superior acid corrosion resistance

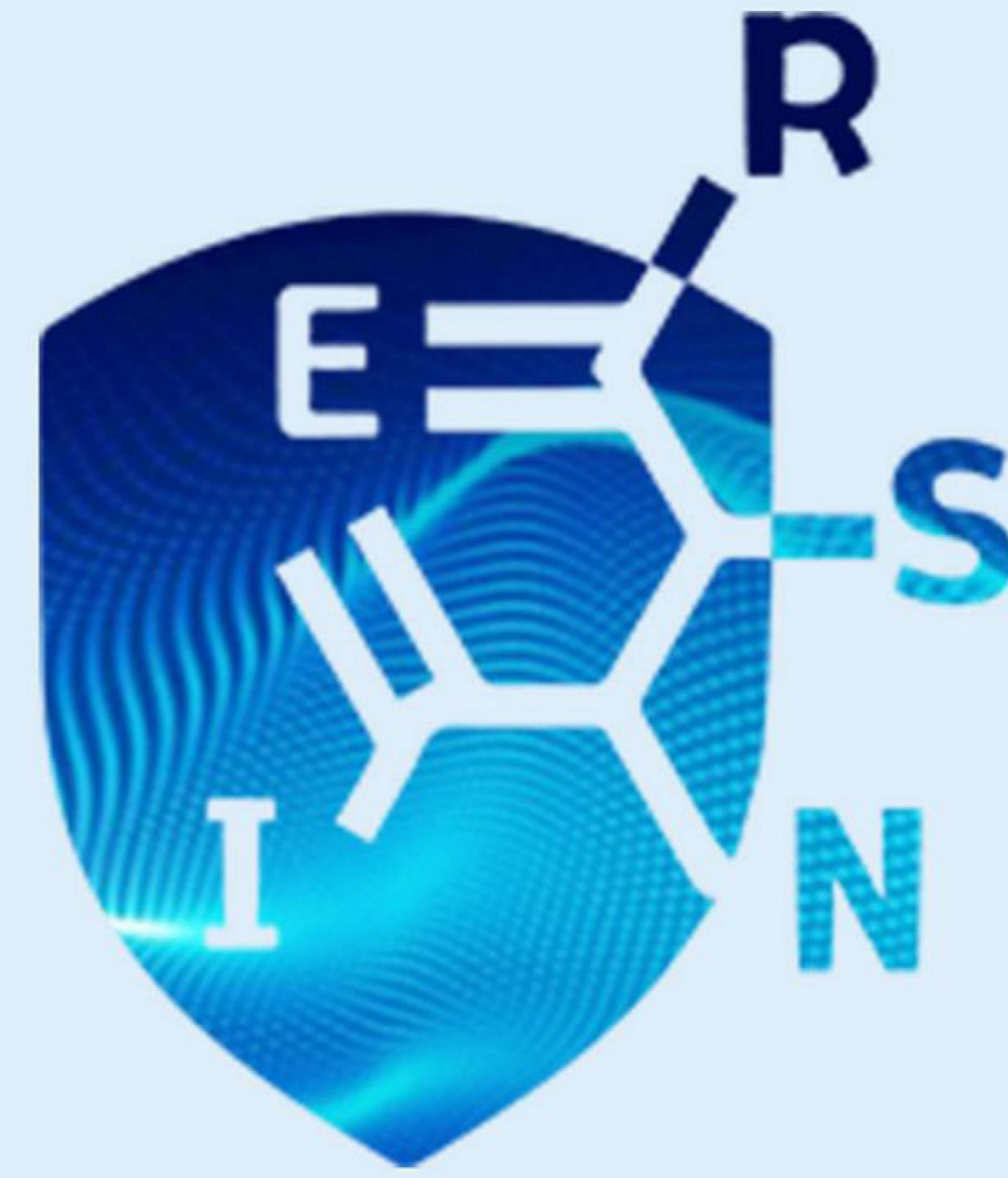
Product Name	Product Code	Area Weight(g/m2)	Typical Width(mm)	Resin Compatibility	Product Features
<b>Powder Chopped Strand Mats</b>  Powder Chopped Strand Mats are made of randomly distributed chopped strands held together by a powder binder. They are compatible with UP, VE, EP and PF resins. The roll width ranges from 200mm to 3,120mm. Additional demands on wet-out and decomposition time can be available upon request.	P02	225, 300,450, 600,900	1040.127	UP, VE, EP	High tensile strength, suitable for use in hand lay-up process to produce large-area parts, good wet-through and fast wet-out in resins, rapid air release, high mechanical strength
	P20	225, 300,450, 600,900	1040.127	UP, VE, EP	Soft mat, ease of manual tearing apart, good conformability, good wet-through and fast wet-out in resins, rapid air release reducing rolling out times and increasing productivity, low resin consumption, high mechanical strength of composite products, superior acid corrosion resistance
	P30	225, 300, 450, 600, 900	1040.1270	UP, VE	Fast wet-out, suitable for use in high translucent panels

# FIBERGLASS CHOPPED STRAND MATS



Product Name	Certification	Product Code	Certificate No
<b>Powder Chopped Strand Mats</b>  	(DNV)	EMC300	TAK00001TJ
		EMC450	
		EMC600	
		EMC900	
	(LR)	EMC225(E)	MAST/3490/2
		EMC300(E)	
		EMC450(E)	
		EMC600(E)	
		EMC300(P)	LR2002414LP
		EMC450(P)	
		EMC600(P)	
		EMC900(P)	

Product Name	Product Code	Area Weight(g/m2)	TypicalWidth(mm)	Product Features
<b>Powder Chopped Strand Mat</b>  P10 Powder Chopped Strand Mat is made of randomly distributed chopped E6 glass strands held together by an powder binder. P10 is designed for use in automotive headliners and can also be used in other composite products as per customers' requirements.	P10	100 110 135	1040 1270	Low weight, suitable for user in automotive headliners



## Anhui Tianfu New Material Co.,Ltd.

🏠 Address: Room 1716, Lvdi Building, Qianshan Road, Zhengwu District, Hefei City, Anhui Province, China.

🌐 Website: [www.tfcomposite.com](http://www.tfcomposite.com)

📞 Tel/Whatsapp/Wechat/Skype: +86 13696771864

✉ E-mail: [sales@tfcomposite.com](mailto:sales@tfcomposite.com)