



362J

LFT用直接无捻粗纱

Direct Roving for LFT

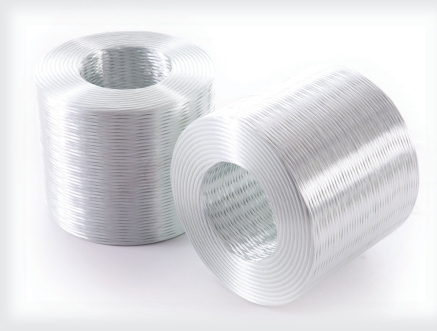
产品说明 Product Description

362J 是直接无捻粗纱，适用于 LFT 工艺增强改性 PP 树脂。

362J 产品适用于 LFT-D（长纤维增强热塑性树脂直接在线混配技术）、LFT-G（料粒）两种工艺，并广泛用于汽车、电子电气、通讯、运动器材、医疗器械等领域。

362J direct roving is specially designed to reinforce modified PP resin in the LFT (long fiber thermoplastics) process.

362J is suitable for both LFT-D (direct in-line compounding) and LFT-G (granulate) processes, and widely used in automotive, electrical and electronic, communication, sports, and medical equipment.



产品特点 Product Features

- ◎ 分散性好
- ◎ 耐磨性好，毛羽少
- ◎ 与PP树脂相容性好
- ◎ 制品具有优异的机械性能

- Good dispersion
- Good abrasion resistance and low fuzz
- Good compatilbly with PP resin
- Excellent mechanical properties of parts

规格代号 Specification

玻璃类型 Glass type	E
浸润剂类型 Sizing type	硅烷 Silane
典型纤维直径 Typical filament diameter (μm)	17
典型线密度 Typical linear density (tex)	2400
示例 Example	EDR17-2400-362J

技术指标 Technical Parameters

项目 Item	线密度偏差 Linear density variation	含水率 Moisture content	可燃物含量 Sizing content
单位 Unit	%	%	%
检测方法 Test method	ISO 1889	ISO 3344	ISO 1887
指标 Standard range	< 600 tex: ± 5 ≥ 600 tex: ± 4	≤ 0.07	0.40 ± 0.10

使用说明 Instructions

- ◎ 本产品可在12个月内使用最佳，使用前应保存在原包装内。
- ◎ 产品使用时注意防护，避免产品擦毛、损伤等情况。
- ◎ 使用前调理纱线的温湿度与环境温湿度平衡，使用时对环境温湿度进行适当控制。
- ◎ 使用时请合理控制张力并保证张力均匀性。

- The product is best used within 12 months after production, and should be kept in the original package before use.
- Care should be taken when using the product to prevent it from being scratched or damaged.
- The temperature and humidity of the product should be conditioned to be close or equal to the ambient temperature and humidity before use, and the ambient temperature and humidity should be properly controlled during the use.
- When using the product, please control the tension properly and ensure the tension uniformity.



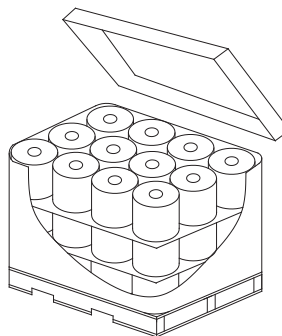
362J

LFT用直接无捻粗纱

Direct Roving for LFT

包装信息 Packaging

项目Item	单位unit	指标Standard	
典型包装方式 Typical packaging method	/	采用托盘包装 Packed on pallets.	
典型纱团高度 Typical package height	mm (in)	260 (10.2)	
纱团内径 Package inner diameter	mm (in)	160 (6.3)	
典型纱团外径 Typical package outer diameter	mm (in)	305 (12.0)	
典型纱团重量 Typical package weight	kg (lb)	21 (46.3)	
层数 Number of layers	层 (layer)	3	4
每层纱团个数 Number of packages per layer	个 (pcs)	12	
每托纱团个数 Number of packages per pallet	个 (pcs)	36	48
每托重量 Net weight per pallet	kg (lb)	756 (1666.7)	1008 (2222.3)
托盘长度 Pallet length	mm (in)	1270 (50.0)	
托盘宽度 Pallet width	mm (in)	960 (37.8)	
托盘高度 Pallet height	mm (in)	940 (37.0)	1200 (47.2)



贮存 Storage

在没有特殊要求的情况下，玻璃纤维产品应贮存在干燥、阴凉的地方，防止受潮。最佳存储条件为温度 $-10^{\circ}\text{C} \sim 35^{\circ}\text{C}$ ，相对湿度 $\leq 80\%$ 。为确保安全，避免损坏产品，托盘的堆码高度不应超过三层。当堆放两层或三层高时，要求正确地、平稳地移动上面的托盘。

Unless otherwise specified, the fiberglass products should be stored in a dry, cool and moisture-proof area. The best temperature and humidity should be maintained at $-10^{\circ}\text{C} \sim 35^{\circ}\text{C}$ and $\leq 80\%$ respectively. To ensure safety and avoid damage to the product, the pallets should be stacked not more than three layers high. When the pallets are stacked in two or three layers, special care should be taken to correctly and smoothly move the upper pallet.