



# 960A

## 热塑性塑料用无捻粗纱 Roving for Thermoplastics

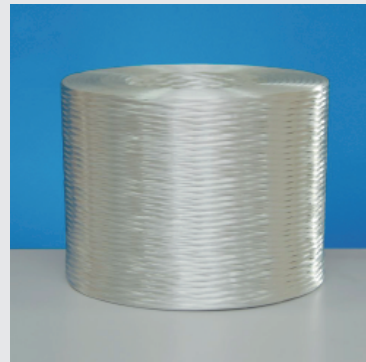
### 产品说明 Product Description

960A 无捻粗纱是热塑性塑料理想的增强材料，表面涂覆硅烷偶联剂，适用于增强 PA、PBT、PP、PC、AS 树脂，且在增强 PP/AS 方面性能特别优异。

960A 适用挤出注塑工艺，广泛应用于汽车工业、家电、运输、包装等领域。

960A Rovings are ideal reinforcements for thermoplastics. Coated with a silane-based sizing, the rovings are suitable for reinforcing PA, PBT, PC, and especially PP and AS resins.

960A are designed for extrusion and injection processes, and are widely used in automotive, electric appliances, transportation and packaging.



### 产品特点 Product Features

- ◎ 产品通用性好，可用于增强多种热塑性塑料
- ◎ 产品毛羽少，加工顺畅性好
- ◎ 产品力学性能优异，制品表面浮纤少
- Good general purpose for multiple thermoplastics
- Low fuzz and good processability
- Excellent mechanical properties and good surface of finished articles

### 规格代号 Specification

玻璃类型 Glass type	E	
浸润剂类型 Sizing type	硅烷 Silane	
典型纤维直径 Typical filament diameter (μm)	14	17
典型线密度 Typical linear density (tex)	1000 / 1500 / 2000	2400
示例 Example	EDR14-2000-960A	

### 技术指标 Technical Parameters

项目 Item	线密度偏差 Linear density variation (%)	含水率 Moisture content (%)	可燃物含量 Sizing content (%)
检测方法 Test method	ISO 1889	ISO 3344	ISO 1887
指标 Standard range	< 600 tex: ± 5 ≥ 600 tex: ± 4	≤ 0.15	0.15 ± 0.10

### 使用说明 Instructions

- ◎ 本产品应在12个月内使用最佳，使用前应保存在原包装内。
- ◎ 产品使用时注意防护，避免产品擦毛、损伤等情况。
- ◎ 使用前调理纱线的温湿度与环境温湿度平衡，使用时对环境温湿度进行适当控制。
- The product is best used within 12 months after production, and should be kept in the original package before use.
- Care should be taken when using the product to prevent it from being scratched or damaged.
- The temperature and humidity of the product should be conditioned to be close or equal to the ambient temperature and humidity before use, and the ambient temperature and humidity should be properly controlled during the use.



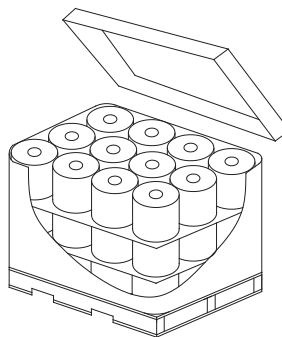
# 960A

## 热塑性塑料用无捻粗纱

### Roving for Thermoplastics

#### 包装信息 Packaging

项目 Item	单位 unit	指标 Standard	
典型包装方式 Typical packaging method	/	采用托盘包装 Packed on pallets.	
典型纱团高度 Typical package height	mm (in)	260 (10.2)	
纱团内径 Package inner diameter	mm (in)	160 (6.3)	
典型纱团外径 Typical package outer diameter	mm (in)	310 (12.2)	
典型纱团重量 Typical package weight	kg (lb)	22 (48.5)	
层数 Number of layers	层 (layer)	3	4
每层纱团个数 Number of packages per layer	个 (pcs)	12	
每托纱团个数 Number of packages per pallet	个 (pcs)	36	48
每托重量 Net weight per pallet	kg (lb)	792 (1746.1)	1056 (2328.1)
托盘长度 Pallet length	mm (in)	1270 (50.0)	
托盘宽度 Pallet width	mm (in)	960 (37.8)	
托盘高度 Pallet height	mm (in)	940 (37.0)	1200 (47.2)



#### 贮存 Storage

在没有特殊要求的情况下，玻璃纤维产品应贮存在干燥、阴凉的地方，防止受潮。最佳存储条件为温度  $-10^{\circ}\text{C} \sim 35^{\circ}\text{C}$ ，相对湿度  $\leq 80\%$ 。为确保安全，避免损坏产品，托盘的堆码高度不应超过三层。当堆放两层或三层高时，要求正确地、平稳地移动上面的托盘。

Unless otherwise specified, the fiberglass products should be stored in a dry, cool and moisture-proof area. The best temperature and humidity should be maintained at  $-10^{\circ}\text{C} \sim 35^{\circ}\text{C}$  and  $\leq 80\%$  respectively. To ensure safety and avoid damage to the product, the pallets should be stacked not more than three layers high. When the pallets are stacked in two or three layers, special care should be taken to correctly and smoothly move the upper pallet.

安徽天复新材料有限公司 ANHUI TIANFU NEW MATERIAL CO.,LTD

Copyright 2024 安徽天复新材料有限公司

Add: Room 1716, Lvdi Building, Qianshan Road, Zhengwu District, Hefei City, Anhui Province, China

Tel/WhatsApp/Skype: +86 13696771864

Email: sales@tfcomposite.com

Website: www.tfcomposite.com