



ABOUT CYLON GROUP

关于西朗



CYLON Group was founded in 1999 and is a modern high-tech enterprise specializing in integrating electrical design, R&D, manufacturing, sales, and service under one platform. Since its establishment, the company has always adhered to the principles of "Integrity, Innovation, and Quality" as its founding mission and regards "Technology+Service" as the core foundation of its business.

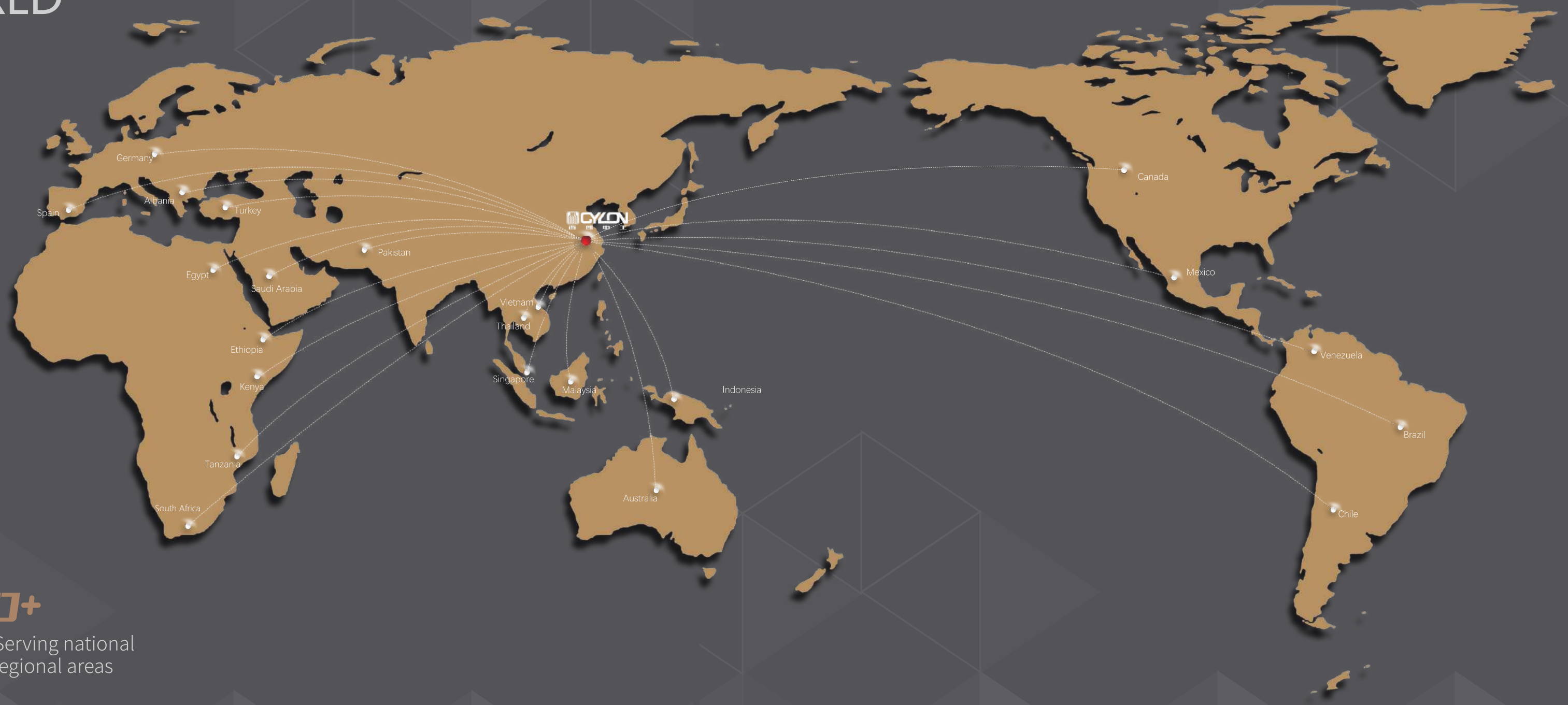


CYLON Group has been committed to scientific and technological innovation and management upgrades, successfully establishing a standardized management system covering quality, environment, occupational health, and safety. Additionally, it has obtained certifications such as COC (China Quality Certification Center) product safety certification and CCC (China Compulsory Certification) national mandatory product certification, forming a comprehensive standardized certification system covering the entire process.



CYLON Group has obtained numerous technical professional certifications and production licenses for electrical industrial products. By leveraging advanced technology, excellent quality, and comprehensive service, the company has established a strong foothold in the electrical industry, laying a solid foundation for XiLang to become a world-class brand in the power-transmission and distribution sector.

SERVING THE WORLD



1999

5 Subsidiaries

60+

+60 Serving national and regional areas

100+

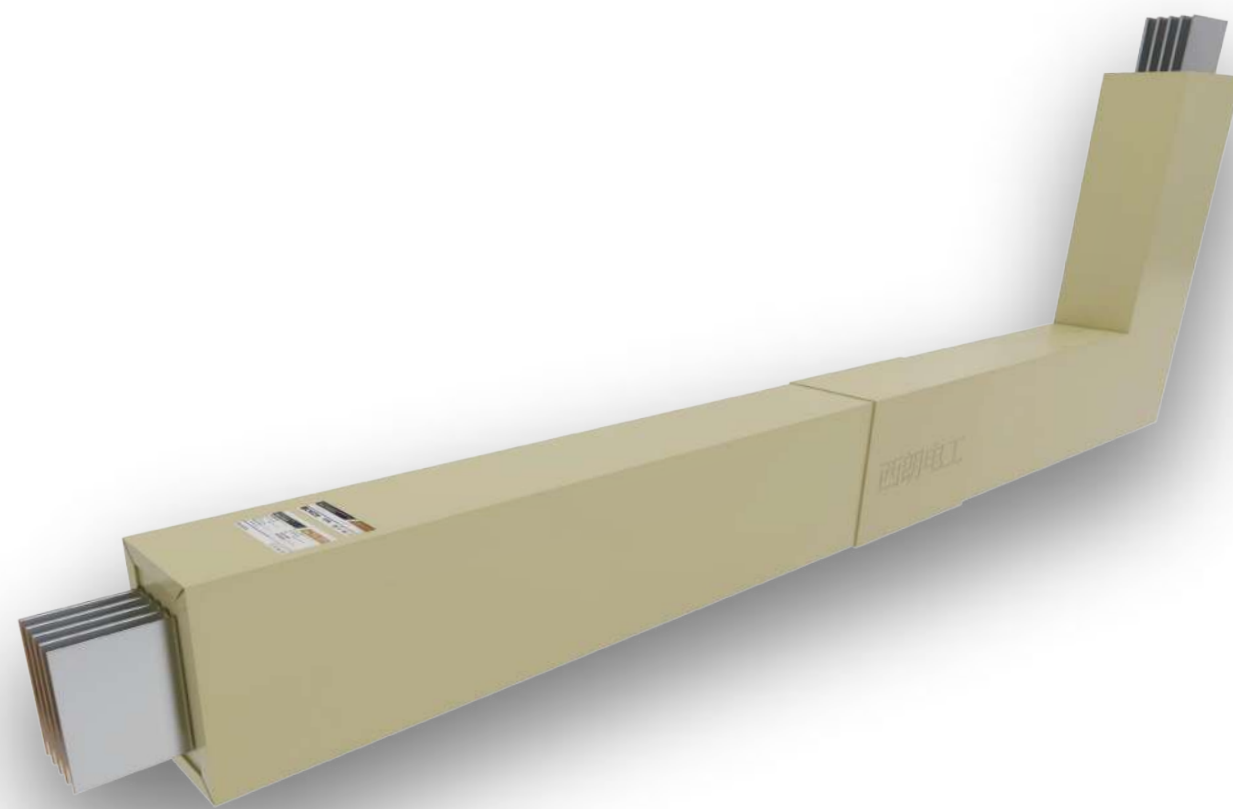
+100 Professional technical personnel

300000+

+30000 cumulative customers

CY-FS

Cast Resin Busway



**Dustproof, Waterproof,
 Explosion-proof & Corrosion-resistant**

**Fully sealed, IP68 protection grade,
 long-term operation at -40°C**

Product Features

Protection Functions

Dustproof and Waterproof: Cast with high-performance insulating resin, with an ingress protection rating of IP68.

Fire Resistance: Made of self-extinguishing insulating material, with a fire resistance rating of F120.

Corrosion Resistance: Resistant to acid rain, corrosive gases, and corrosive liquids.



Mineral-filled Epoxy Casting Material

Environmental Adaptability: The main material ensures no cracking at -40°C.

Mechanical Properties: Capable of withstanding 6 Joules of mechanical impact, reaching IK10 impact protection rating.

Electrical Performance: Tight contact points reduce contact resistance and improve current transmission efficiency.

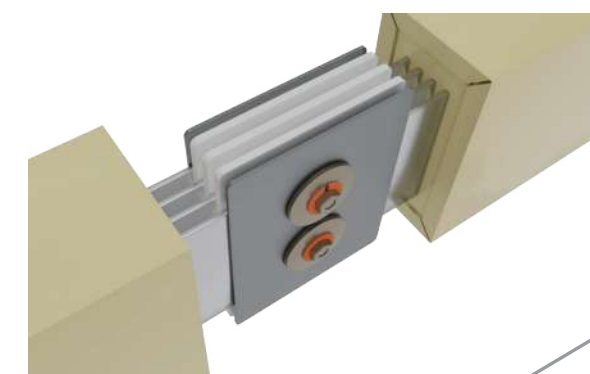


Connector

Active Design: Allows free vertical adjustment during installation.

Limit Design: Improves installation efficiency and quality standards.

Silver/Tin Plating: Double-sided lap joint increases the conductor cross-section, ensuring excellent conductive performance of the connector.

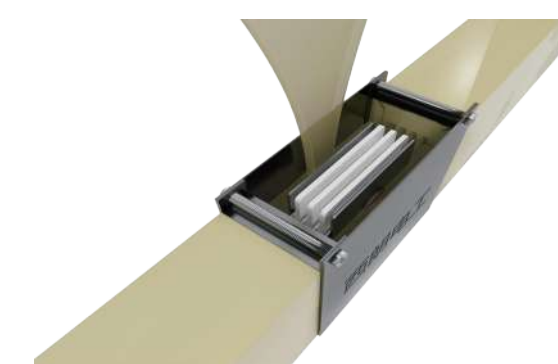


Rapid Concrete Pouring Construction

Casting Mold: Metal template, anti-deformation; Easy to install, no need for removal, reducing secondary operations.

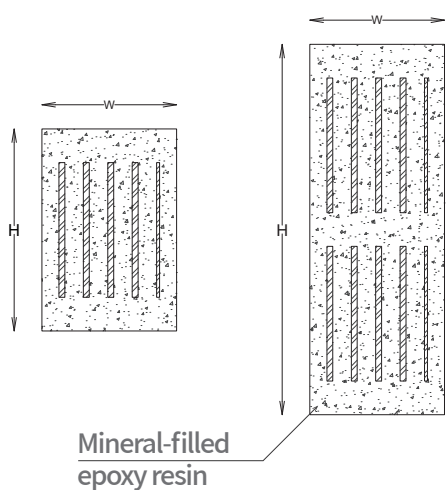
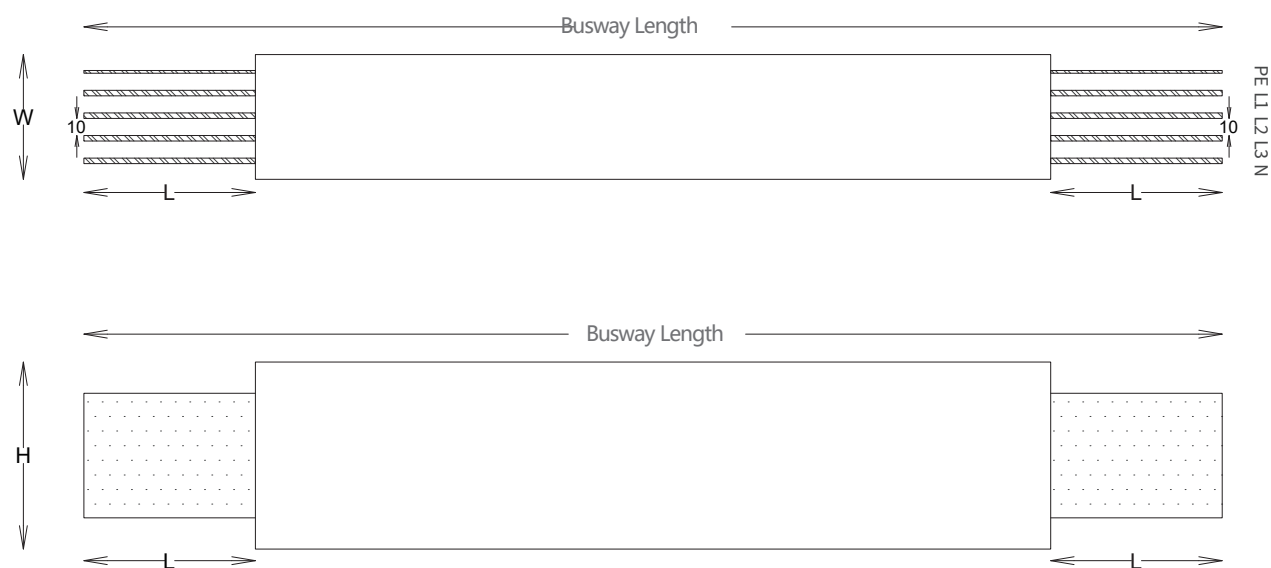
Epoxy Casting: On-site proportioning and mixing, rapid curing in a short time.

Integrated Design: No splicing or riveting gaps in the volume section, resulting in a more aesthetic appearance after casting and molding.



CY-FS Cast Resin Busway System

Steering elbow connecting piece

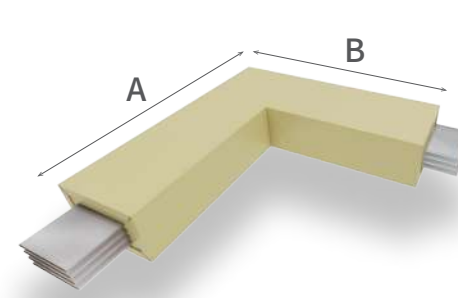


Copper Bus Duct Product Technical Parameters Table

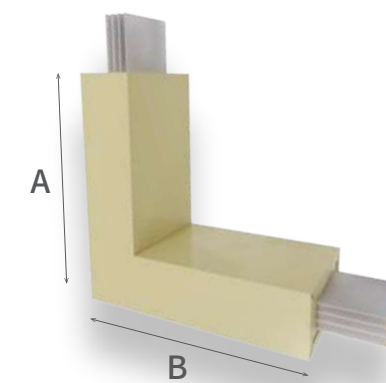
Compliance Standard	IEC60439.1-1999, IEC60439.2-2000, GB7251.1-2005, GB7251.2-2006, GB/T7251.6-2015											
Conductor Material	Cu+Ag ≥ 99.95%											
Enclosure	High-hardness epoxy synthetic resin											
Unit Length	Optional between 0.5m and 3m											
Ingress Protection Rating	IP68											
Rated Insulation Voltage	V	1000										
Rated Operating Voltage	V	AC1000										
Rated Frequency	Hz	50										
Rated Current	A	400	630	800	1000	1250	1600	2000	2500	3200	4000	
Resistance	$\times 10^{-3} \Omega/m$	125.6	117.3	109.4	97.8	84.3	76.1	69.8	60.2	46.5	33.5	
Reactance	$\times 10^{-3} \Omega/m$	76.8	66.1	60.2	52.2	43.2	37.5	32.1	23.9	16.8	11.7	
Impedance	$\times 10^{-3} \Omega/m$	92.5	82.4	71.3	62.1	55.4	46.9	38.8	32.8	26.4	22.1	
Voltage Drop	V/m	0.178	0.169	0.155	0.151	0.147	0.143	0.139	0.137	0.134	0.131	
Rated Short-time Withstand Current(t=1s)	kA	30					80					
Rated Peak Withstand Current	kA	63					176					
Electrical Clearance	mm	≥ 10										
Creepage Distanc	Mm	≥ 10										
Insulation Resistanc	MΩ	≥ 10										
Earth Resistanc	Ω	≤ 0.01										
Dielectric Properties		50Hz, 3.75kV/1min, no breakdown or flashover										
Temperature Ris	K	≤ 55					≤ 70					

Dimension:

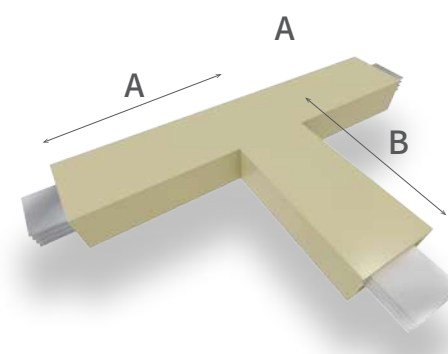
Current Rating (A)	Type		
	External	W (mm)	H (mm)
400		80	65
500		80	65
630		80	75
800		80	85
1000		80	100
1250		80	115
1600		80	150
2000		80	180
2500		80	220
3200		80	300
4000		80	375



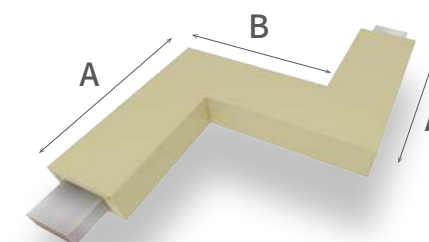
Horizontal Elbow



Vertical Elbow



T-shaped Elbow



Z-shaped Elbow

Rated Current	standard section	
	A (mm)	B (mm)
400	500	500
500	500	500
630	500	500
800	500	500
1000	500	500
1250	500	500
1600	500	500
2000	500	500
2500	500	500
3200	500	500
4000	500	500



Assembly



Securing



Potting Resin