



FIRST-CLASS PRODUCTS
FIRST-CLASS BRAND
FIRST-CLASS SERVICE



Ultrapure
Water Online



WeChat

Hefei Youshui Mechanical Electric Equipment Co., Ltd.

Address: Building 3B, 2nd Floor, YosiTech High-Tech Innovation Industrial
Park, Hefei High-Tech Development Zone

Tel: 0551-65655086

Service Hotline: 400-0808-390

URL: www.ys-purewater.com

 YOUSHUI·机电

Focus on medical
laboratory water
treatment equipment





Contents

Company Profile 01

Clinical Laboratory Ultra-Pure Water 03

Laboratory Ultra-Pure Water Equipment 05

Oral Department/Endoscope Cleaning Equipment 07

Sterile Supply Room Pure Water Equipment 09

Industrial Reverse Osmosis Pure Water Equipment 11

Water Treatment Equipment for Hemodialysis 13

Genuine OEM Parts 15

Client Testimonials Across the Nation 16

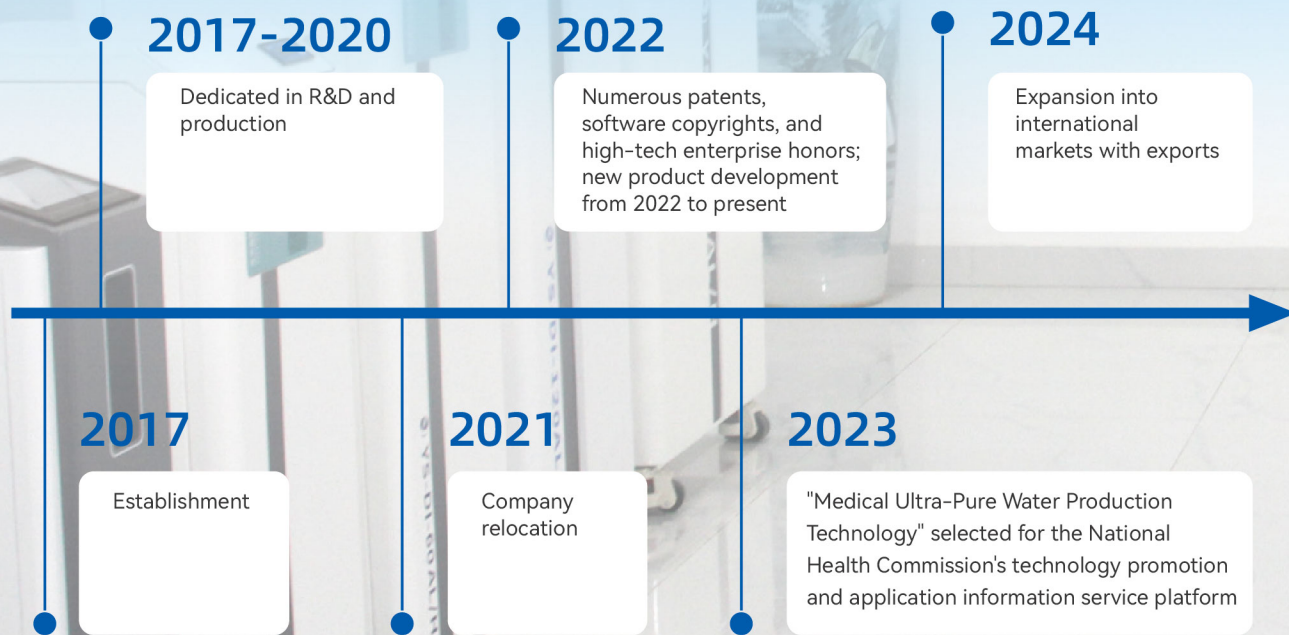
Company Profile

Hefei Youshui Mechanical Electric Equipment Co., Ltd. is a supplier of ultra-pure water equipment and comprehensive solutions. The company is located in the YosiTech High-Tech Innovation Industrial Park within the Hefei National High-Tech Zone. Integrating R&D, production, sales, and service, it offers high-tech products and services across various fields, including medical institutions, laboratories, integrated circuit manufacturing, and testing and inspection agencies.

As a national high-tech enterprise, Youshui is committed to the corporate mission of "First class products, first-class brand, first-class service."

Primary applications: medical testing, laboratories, endoscopy rooms, supply rooms, hemodialysis centers and industrial fields (high-precision electrochemical configuration water supply/battery cells/storage batteries/chips/photovoltaic water supply, such as water supply for constant quantitative analysis).

Since inception, the Company has served more than 5,000 laboratories and medical users; through years of technological innovation Youshui has gained visibility and reputation in the industry.



Clinical Laboratory Ultra-Pure Water Equipment

YD-DI-(10-20)AL/H Desktop Mode



YS-DI-(10-30)AL/H Floor Model



YS-DI-30AL/H Dual-Stage Model



YS-DI-40AL/H



YS-DI-60AL/H



YS-DI-80BL/H



YS-DI-(80-120)AL/H



YS-DI-(150-200)AL/H



YS-DI-(300-500)AL/H



CLINICAL LABORATORY ULTRA-PURE WATER EQUIPMENT INFORMATION TABLE

Model	YS-DI-(10-20)AL/H Desktop Model	YS-DI-(10-30)AL/H Floor Model	YS-DI-30AL/H Dual-Stage Model	YS-DI-40AL/H	YS-DI-60AL/H	YS-DI-80BL/H	YS-DI-(80-120)AL/H	YS-DI-(150-200)AL/H	YS-DI-(300-500)AL/H
Applications	Clinical laboratory of medical institutions	Clinical laboratory of medical institutions	Clinical laboratory of medical institutions	Clinical laboratory of medical institutions	Clinical laboratory of medical institutions	Clinical laboratory of medical institutions	Clinical laboratory of medical institutions	Clinical laboratory of medical institutions	Clinical laboratory of medical institutions
Water output	≥10-20L/H	≥10-30L/H	≥30L/H	≥40L/H	≥60L/H	≥80L/H	≥80-120L/H	≥150-200L/H	≥300-500L/H
Design criteria	GB/T6682-2008 Type I Laboratory Grade Water	GB/T6682-2008 Type I Laboratory Grade Water	GB/T6682-2008 Type I Laboratory Grade Water	GB/T6682-2008 Type I Laboratory Grade Water	GB/T6682-2008 Type I Laboratory Grade Water	GB/T6682-2008 Type I Laboratory Grade Water	GB/T6682-2008 Type I Laboratory Grade Water	GB/T6682-2008 Type I Laboratory Grade Water	GB/T6682-2008 Type I Laboratory Grade Water
Reverse osmosis technology	Single-stage	Single-stage	Dual-stage	Single-stage	Single-stage	Single-stage	Single-stage	Single-stage	Single-stage
Resistivity table	Optional	Standard	Standard	Standard	Standard	Standard	Standard	Standard	Standard
Control system	Electrical control	7" HML	7" HML	7" HML	7" HML	7" HML	7" HML	7" HML	7" HML
Water tank	Optional	Built-in	Built-in	Built-in	Built-in	Built-in	Built-in	External	External
Dimension	26*43*43	30*47*60	30*47*60	40*50*108	41*50*131	43.5*50*131	51*49*142	54*56*148	72*86*170

PERFORMANCE INDICATORS

Water Source Requirements

Municipal tap water that complies with the Standard for drinking water quality (GB5749-2022), with total dissolved solids (TDS) < 500 ppm, water pressure ranging from 2 to 5 kg/cm², and a water temperature between 5-45°C.

Water Quality Standards

1. Resistivity: 15-18 MΩ·cm at 25°C
2. Conforms to Type I Laboratory Grade Water in China (GB/T6682-2008)

Applications

1. Biochemical analysis: For fully automated biochemical analyzers
2. Immunoassay: For immunohistochemistry, immunofluorescence, and ELISA tests
3. Microbial detection: For bacterial culture, antibiotic susceptibility testing, and fungal detection
4. Blood analysis: For routine CBC, coagulation function testing, and blood typing
5. Urine analysis: For routine urine analysis and sediment analysis
6. Molecular biology testing: For nucleic acid extraction, PCR amplification, and gene sequencing
7. Other applications: Ideal for glassware cleaning and equipment cooling in laboratory settings

Laboratory Ultra-Pure Water Equipment

YS-DI-(10-30) L/H



YS-DI-(40-60) L/H



YS-DI-(80-150) L/H



LABORATORY ULTRA-PURE WATER EQUIPMENT INFORMATION TABLE			
Model	YS-DI-(10-30)L/H	YS-DI-(40-60)L/H	YS-DI-(80-150)L/H
Applications	Laboratories	Laboratories	Laboratories
Water output	≥10-30L	≥40-60L	≥80-150L
Design criteria	Conforms to Type I Laboratory Grade Water in China (GB/T6682-2008)	Conforms to Type I Laboratory Grade Water in China (GB/T6682-2008)	Conforms to Type I Laboratory Grade Water in China (GB/T6682-2008)
Reverse osmosis technology	Single-stage	Single-stage	Single-stage
Resistivity table	Present	Present	Present
Controller	Present	Present	Present

PERFORMANCE INDICATORS

Water Source Requirements

Municipal tap water that complies with the Standard for drinking water quality (GB5749-2022), with total dissolved solids (TDS) < 500 ppm, water pressure ranging from 2 to 5 kg/cm², and a water temperature between 5-45°C.

Product Water Quality Indicators

1. RO pure water conductivity: <0-15 μS/cm at 25°C
2. Ultra-pure water resistivity: 18.25 MΩ·cm at 25°C
3. Bacterial removal efficiency: ≥99.6%
4. Particle content (>0.1 μm): <1 particle/mL
5. Microbial count: <1 CFU/mL; Total Organic Carbon (TOC) <10 ppb
Conforms to Type I Laboratory Grade Water in China (GB/T6682-2008)

Applications

1. Biochemical analysis: For fully automated biochemical analyzers
2. Immunoassay: For immunohistochemistry, immunofluorescence, and ELISA tests
3. Microbial detection: For bacterial culture, antibiotic susceptibility testing, and fungal detection
4. Blood analysis: For routine CBC, coagulation function testing, and blood typing
5. Urine analysis: For routine urine analysis and sediment analysis
6. Molecular biology testing: For nucleic acid extraction, PCR amplification, and gene sequencing
7. Other applications: Ideal for glassware cleaning and equipment cooling in laboratory settings

Oral Department/Endoscope Cleaning Equipment

YS-RO-(100-200L/H)



YS-RO-(300-500L/H)



ORAL DEPARTMENT/ENDOSCOPE CLEANING EQUIPMENT INFORMATION TABLE						
Model	YS-RO-100L/H	YS-RO-120L/H	YS-RO-150L/H	YS-RO-200L/H	YS-RO-300L/H	YS-RO-500L/H
Applications	Endoscopy rooms/sterile supply rooms/department of stomatology in medical institutions	Endoscopy rooms/sterile supply rooms/department of stomatology in medical institutions	Endoscopy rooms/sterile supply rooms/department of stomatology in medical institutions	Endoscopy rooms/sterile supply rooms/department of stomatology in medical institutions	Endoscopy rooms/sterile supply rooms/department of stomatology in medical institutions	Endoscopy rooms/sterile supply rooms/department of stomatology in medical institutions
Water output	≥100L/H	≥120L/H	≥150L/H	≥200L/H	≥300L/H	≥500L/H
Design criteria	WS 507-2016 Regulation for cleaning and disinfection technique of flexible endoscope	WS 507-2016 Regulation for cleaning and disinfection technique of flexible endoscope	WS 507-2016 Regulation for cleaning and disinfection technique of flexible endoscope	WS 507-2016 Regulation for cleaning and disinfection technique of flexible endoscope	WS 507-2016 Regulation for cleaning and disinfection technique of flexible endoscope	WS 507-2016 Regulation for cleaning and disinfection technique of flexible endoscope
Reverse osmosis technology	Single-stage RO	Single-stage RO	Single-stage RO	Single-stage RO	Single-stage RO	Single-stage RO
Conductivity Table	Present	Present	Present	Present	Present	Present
Controller	7" touch panel controller	7" touch panel controller	7" touch panel controller	7" touch panel controller	7" touch panel controller	7" touch panel controller
Water tank	External PE 100L	External PE 100L	External PE 200L	External PE 200L	External PE 300L	External PE 500L
Sterile water tank	Optional	Optional	Optional	Optional	Optional	Optional

PERFORMANCE INDICATORS	
Water Source Requirements	Municipal tap water that complies with the Standard for drinking water quality (GB5749-2022), with total dissolved solids (TDS) < 500 ppm, water pressure ranging from 2 to 5 kg/cm ² , and a water temperature between 5-45°C.
Product Water Quality Indicators	Type I Water: Conductivity <15 μS/cm Type II Water: Conductivity <5 μS/cm Pure water complies with the GB5749, with a total bacterial count of less than 10 CFU/100 mL
Equipment technological standard	Regulation for cleaning and disinfection technique of flexible endoscope (WS507-2016) Reverse osmosis water treatment equipment (GB/T19249-2017) Pharmacopoeia of the People's Republic of China (ver.2022) regarding water usage
Applications	<ol style="list-style-type: none"> 1. Endoscopy centers in medical institutions: Cleaning of various flexible endoscopes and related accessories 2. Operating theaters in medical institutions: Cleaning of endoscopes during surgical procedures 3. Research and educational institutions: Research and instructional demonstrations related to endoscopy 4. Endoscope manufacturers and repair facilities: Cleaning of endoscopes during production and after repairs 5. Dental treatment processes: Cleaning of dental handpieces and instruments 6. Dental material preparation: Mixing of impression materials and preparation of dental filling materials 7. Research and teaching: Oral medicine R&D and instructional demonstrations 8. Other areas in dental clinics and medical institutions: Environmental cleaning and hand hygiene for medical personnel

Sterile Supply Room Pure Water Equipment

YS-RO-(100-200L/H)

YS-RO-(300-500L/H)



STERILE SUPPLY ROOM PURE WATER EQUIPMENT INFORMATION TABLE						
Model	YS-RO-100L/H	YS-RO-120L/H	YS-RO-150L/H	YS-RO-200L/H	YS-RO-300L/H	YS-RO-500L/H
Applications	Sterile supply rooms	Sterile supply rooms	Sterile supply rooms	Sterile supply rooms	Sterile supply rooms	Sterile supply rooms
Water output	≥100L/H	≥120L/H	≥150L/H	≥200L/H	≥300L/H	≥500L/H
Design criteria	Reverse osmosis water treatment equipment (GB/T19249-2017) Pharmacopoeia of the People's Republic of China (ver.2022) regarding water usage	Reverse osmosis water treatment equipment (GB/T19249-2017) Pharmacopoeia of the People's Republic of China (ver.2022) regarding water usage	Reverse osmosis water treatment equipment (GB/T19249-2017) Pharmacopoeia of the People's Republic of China (ver.2022) regarding water usage	Reverse osmosis water treatment equipment (GB/T19249-2017) Pharmacopoeia of the People's Republic of China (ver.2022) regarding water usage	Reverse osmosis water treatment equipment (GB/T19249-2017) Pharmacopoeia of the People's Republic of China (ver.2022) regarding water usage	Reverse osmosis water treatment equipment (GB/T19249-2017) Pharmacopoeia of the People's Republic of China (ver.2022) regarding water usage
Reverse osmosis technology	Single-stage RO	Single-stage RO	Single-stage RO	Single-stage RO	Single-stage RO	Single-stage RO
Conductivity Table	Present	Present	Present	Present	Present	Present
Controller	7" touch panel controller	7" touch panel controller	7" touch panel controller	7" touch panel controller	7" touch panel controller	7" touch panel controller
Water tank	External PE 100L	External PE 100L	External PE 200L	External PE 200L	External PE 300L	External PE 500L
Sterile water tank	Optional	Optional	Optional	Optional	Optional	Optional

PERFORMANCE INDICATORS

Water Source Requirements Municipal tap water that complies with the Standard for drinking water quality (GB5749-2022), with total dissolved solids (TDS) < 500 ppm, water pressure ranging from 2 to 5 kg/cm², and a water temperature between 5-45°C.

Water Quality Requirements Conductivity ≤ 15 μS/cm at 25°C.

Applications

1. Medical equipment cleaning: Cleaning of surgical instruments and endoscopes
2. Disinfection and sterilization: High-temperature steam sterilization and low-temperature plasma sterilization
3. Laboratory testing: Microbiological and water quality testing
4. Other applications: Maintenance of cleaning and disinfection equipment, and general environmental cleaning

Industrial Reverse Osmosis Pure Water Equipment

YS-DI-(0.5T-3T)



YS-DI-(2T-8T)



Models can be customized

PERFORMANCE INDICATORS

Water Source Requirements

Municipal tap water that complies with the Standard for drinking water quality (GB5749-2022), with total dissolved solids (TDS) < 500 ppm, water pressure ranging from 2 to 5 kg/cm², and a water temperature between 5-45°C.

Product Water Quality Indicators

Type I Product Water Conductivity: < 10 μS/cm
 Type II Product Water Conductivity: < 5 μS/cm
 EDI resistivity: 15-18.25 MΩ

Applications

1. Electronics industry: Semiconductor manufacturing, circuit board production, and electronic component manufacturing
2. Pharmaceutical industry: Drug production, pharmaceutical research, and medical device cleaning
3. Chemical industry: Preparation of chemical reagents, chemical product manufacturing, and chemical wastewater treatment
4. Power generation industry: Boiler feed water and turbine cooling water
5. Food and beverage industry: Food processing and brewing
6. Automotive manufacturing: Automotive painting and cleaning of automotive components
7. Textile and dyeing industry: Water supply for dyeing processes and textile fiber production
8. Metal processing industry: Metal cleaning and electroplating

Water Treatment Equipment for Hemodialysis

YS-ROII-(0.5T-3T)

WATER TREATMENT EQUIPMENT FOR HEMODIALYSIS INFORMATION TABLE						
Model	YS-ROII-0.5T	YS-ROII-1T	YS-ROII-1.5T	YS-ROII-2T	YS-ROII-2.5T	YS-ROII-3T
Applications	Hemodialysis centers	Hemodialysis centers	Hemodialysis centers	Hemodialysis centers	Hemodialysis centers	Hemodialysis centers
Water output	≥0.5T	≥1T	≥1.5T	≥2T	≥2.5T	≥3T
Design criteria	As per YY0572-2015 Water for haemodialysis and related therapies	As per YY0572-2015 Water for haemodialysis and related therapies	As per YY0572-2015 Water for haemodialysis and related therapies	As per YY0572-2015 Water for haemodialysis and related therapies	As per YY0572-2015 Water for haemodialysis and related therapies	As per YY0572-2015 Water for haemodialysis and related therapies
Reverse osmosis technology	Dual-stage	Dual-stage	Dual-stage	Dual-stage	Dual-stage	Dual-stage
Conductivity Table	Present	Present	Present	Present	Present	Present
Control system	10" HML	10" HML	10" HML	10" HML	10" HML	10" HML
No. of bed(s)	1-20	20-30	30-40	40-50	50-60	60-70

PERFORMANCE INDICATORS

Water Source Requirements

Municipal tap water that complies with the Standard for drinking water quality (GB5749-2022), with total dissolved solids (TDS) < 500 ppm, water pressure ranging from 2 to 5 kg/cm², and a water temperature between 5-45°C.

Product Water Quality Indicators

1. As per YY0572-2015 Water for haemodialysis and related therapies.
2. As per YY/T0793.1-2022 Preparation and quality management of fluids for haemodialysis and related therapies - Part 1: Water treatment equipment for haemodialysis applications and related therapies.
3. As per Routine control requirements for water treatment equipments for haemodialysis applications and related therapies (YY/T1269-2015)
4. As per Terms of blood purification (GB/T13074-2009)
5. As per Reverse osmosis water treatment equipment (GB/T19249-2017)

Applications

1. Healthcare: Hemodialysis centers, nephrology specialty hospitals, and nephrology departments in general hospitals
2. Related research institutions: Medical research facilities and biomedical research organizations

Structures for our equipment is for reference only, interpretations regarding technical process are reserved by Hefei Youshui Mechanical Electric Equipment Co., Ltd.

Genuine OEM Parts

One-stop solution for your requirements.

Water tank - Customizable to fit the designated space, ensuring seamless integration



Pressure tank - Ensures stability of water volume and pressure balance



EDI

Valve

RO membrane



Activated carbon

Advanced filter

Membrane case

Quartz sand



Softener salt

Resin

Resin tank



Client Testimonials Across the Nation

Our products are trusted and utilized by over 5,000 laboratories and Level 1-3 hospitals nationwide



The above order does not indicate ranking